



[Print this Page](#) | [Close this Window](#)

Software > Windows 2000/XP > Creating an unattended installation of Windows 2000 or XP (P

[< Return to Home](#) | [Printer Friendly Version](#)

## Creating an unattended installation of Windows 2000 or XP (Part 1) (TTID #202)

Author: Travis

Last Updated: October

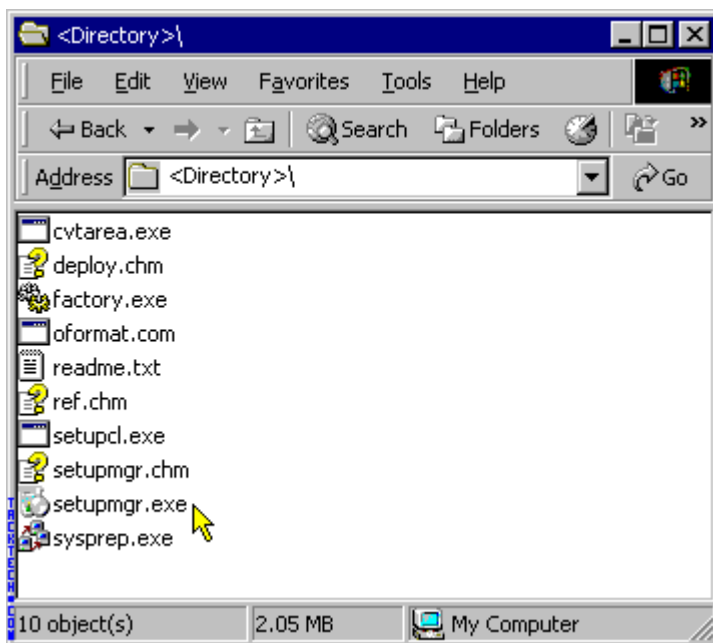
This is Part 1 of **Creating an unattended installation of Windows 2000 or XP**. See Part 2, [here](#).

A list of things you will need.

1. Windows 2000 CD
2. Deploy.cab file either from Windows 2000 or Windows XP. The XP version is much nicer and I will show you how to use it. You can download it here [deploy.cab](#)
3. A CD Writer

**Note:** Yellow Cursor is options we used, blue is alternative options that you can use.

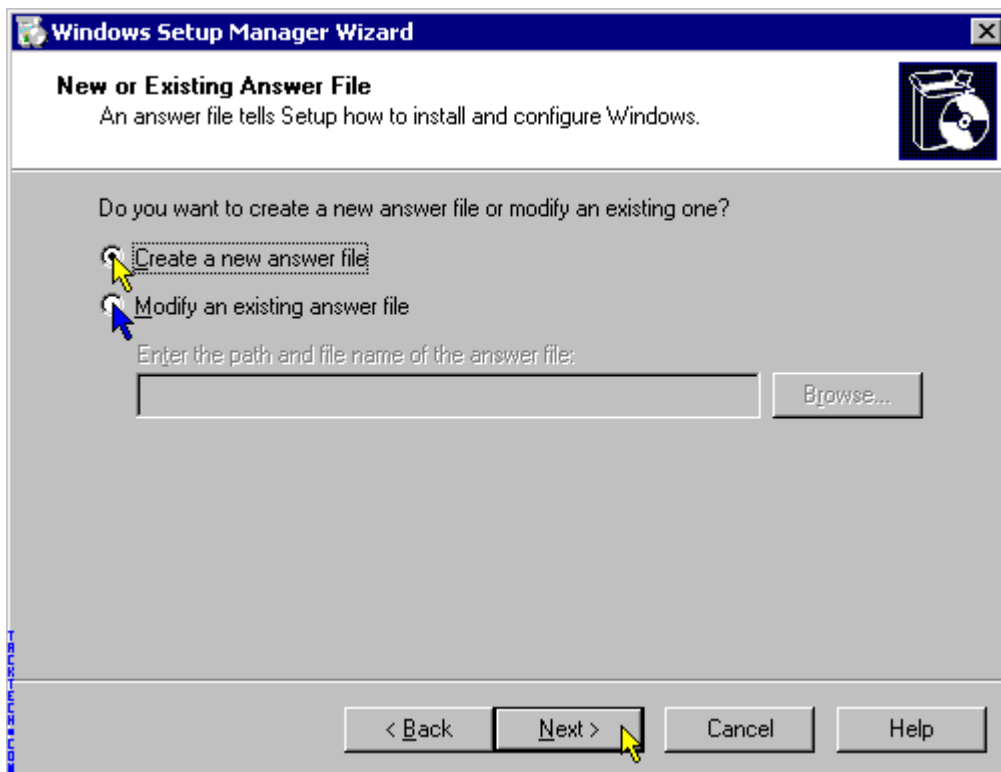
First thing you need to do is run the **setupmgr.exe** file from the deploy.cab file.



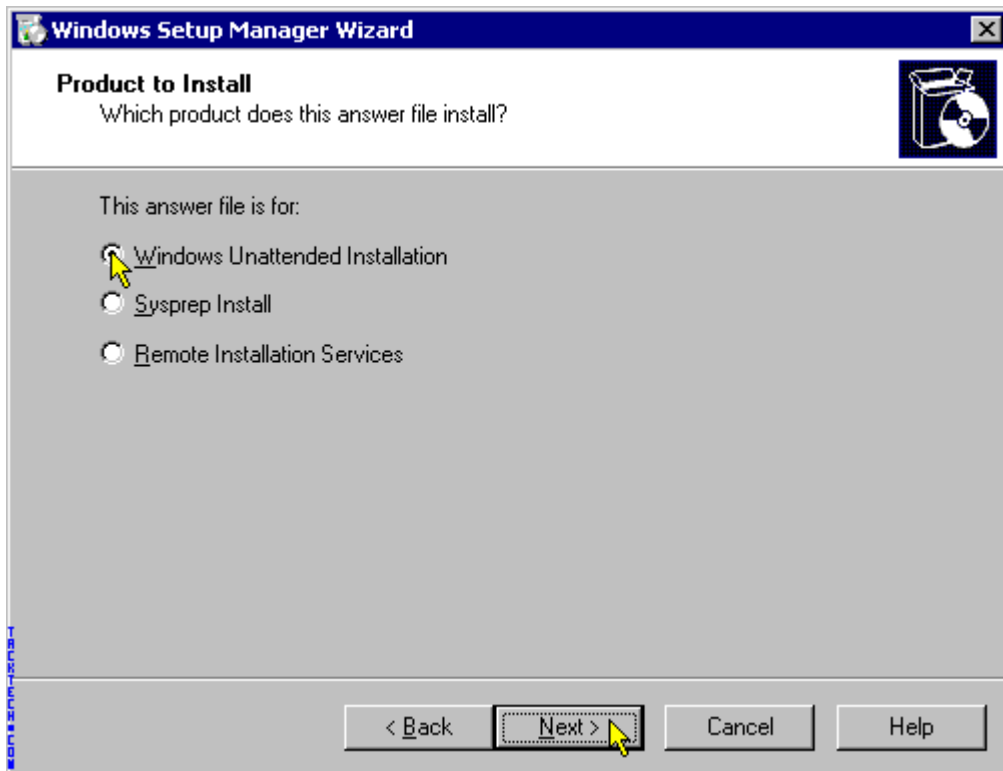
Next we start the wizard.



This step allows you to create a new unattended file or edit an old one. Click **Next**.



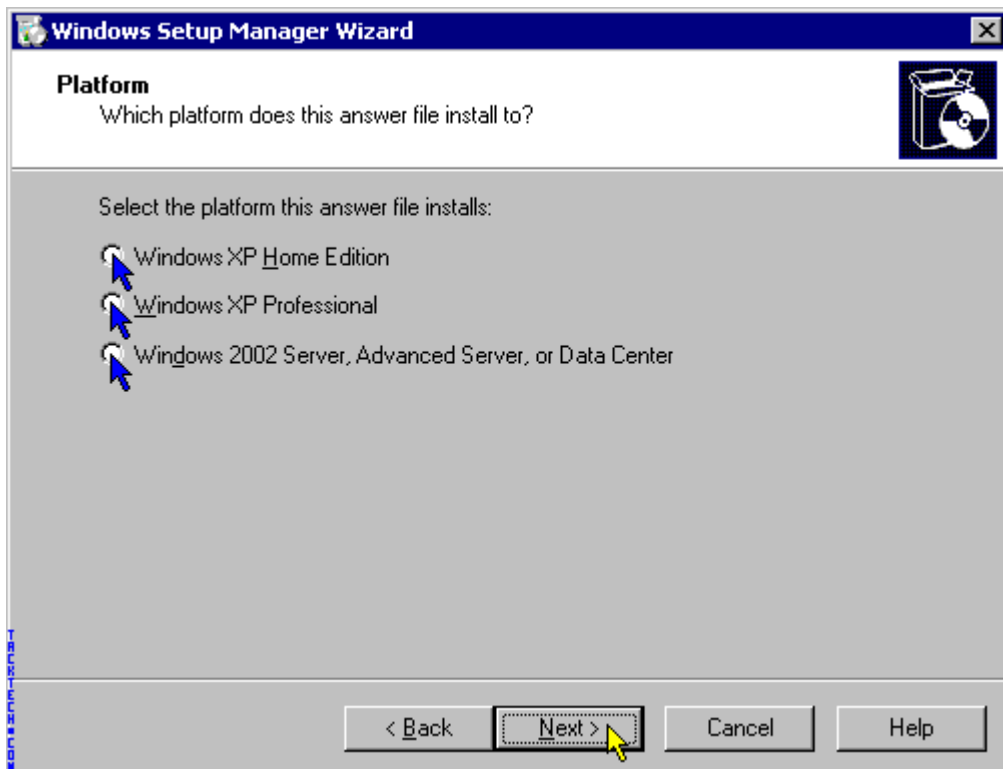
Select the **Windows Unattended Installation**. Click **Next**.



---

Select the Windows version of your choice.  
(**Note:** The Windows 2000 version will also work for Windows Professional).

Click **Next**.

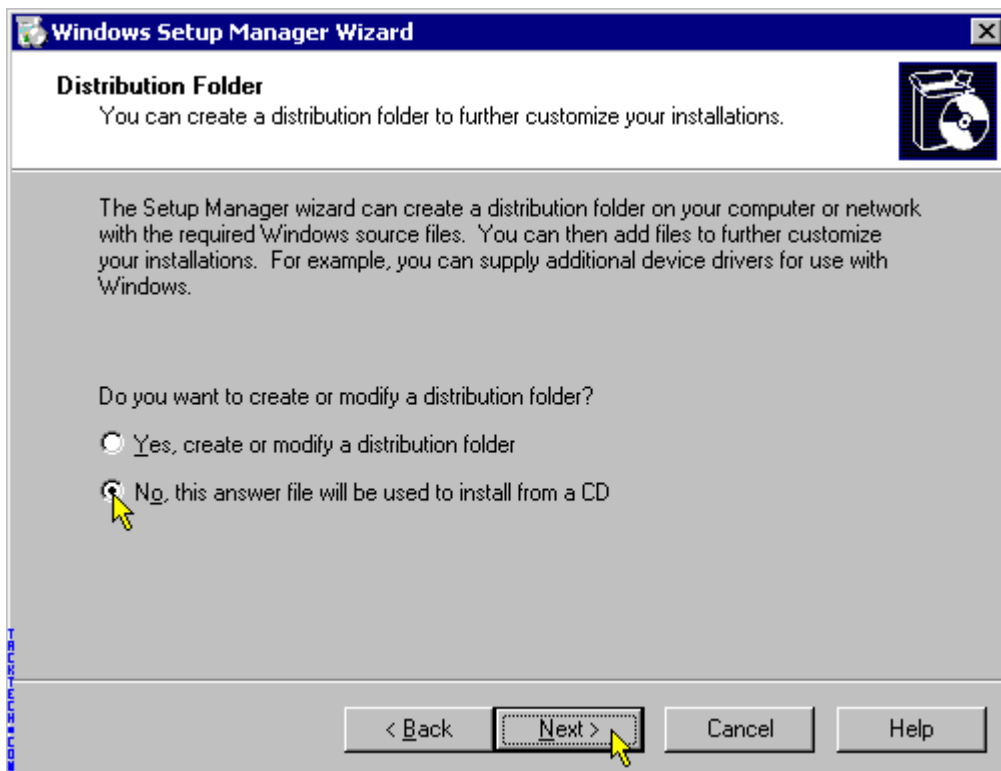


---

Select **Fully Automated**. Click **Next**.



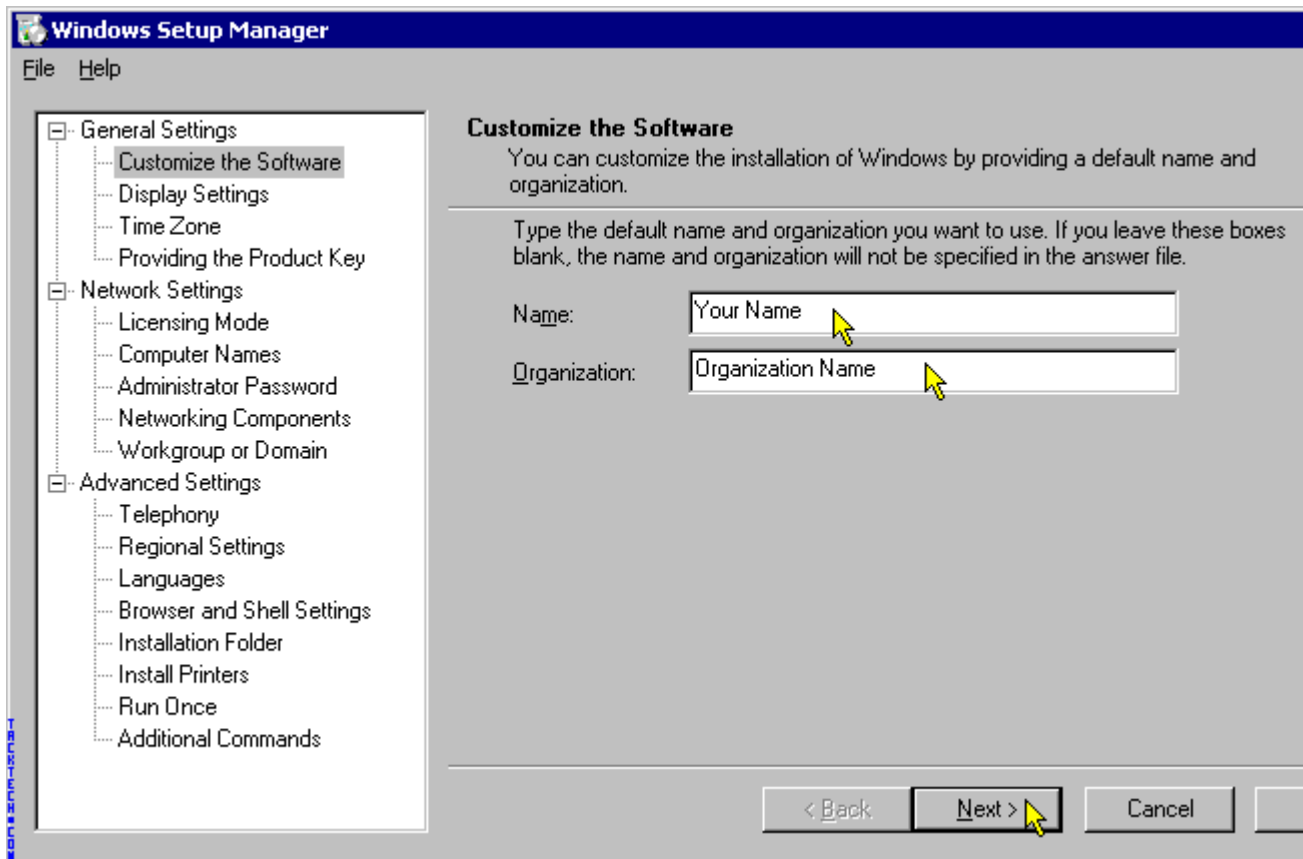
The next screen you can choose to have a distribution directory which isn't too use full but the option is there. We d this example. Click **Next**.



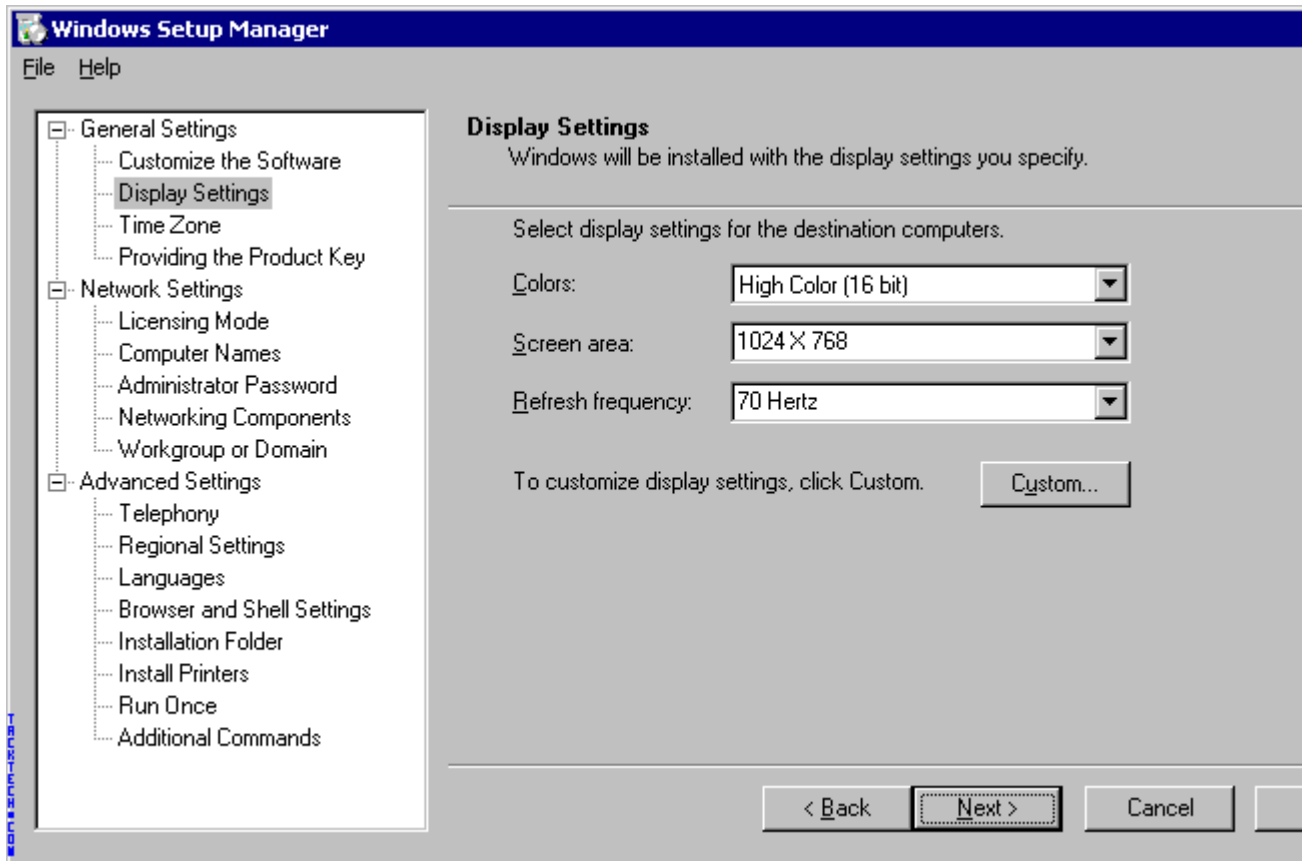
Agree to the EULA. Click **Next**.



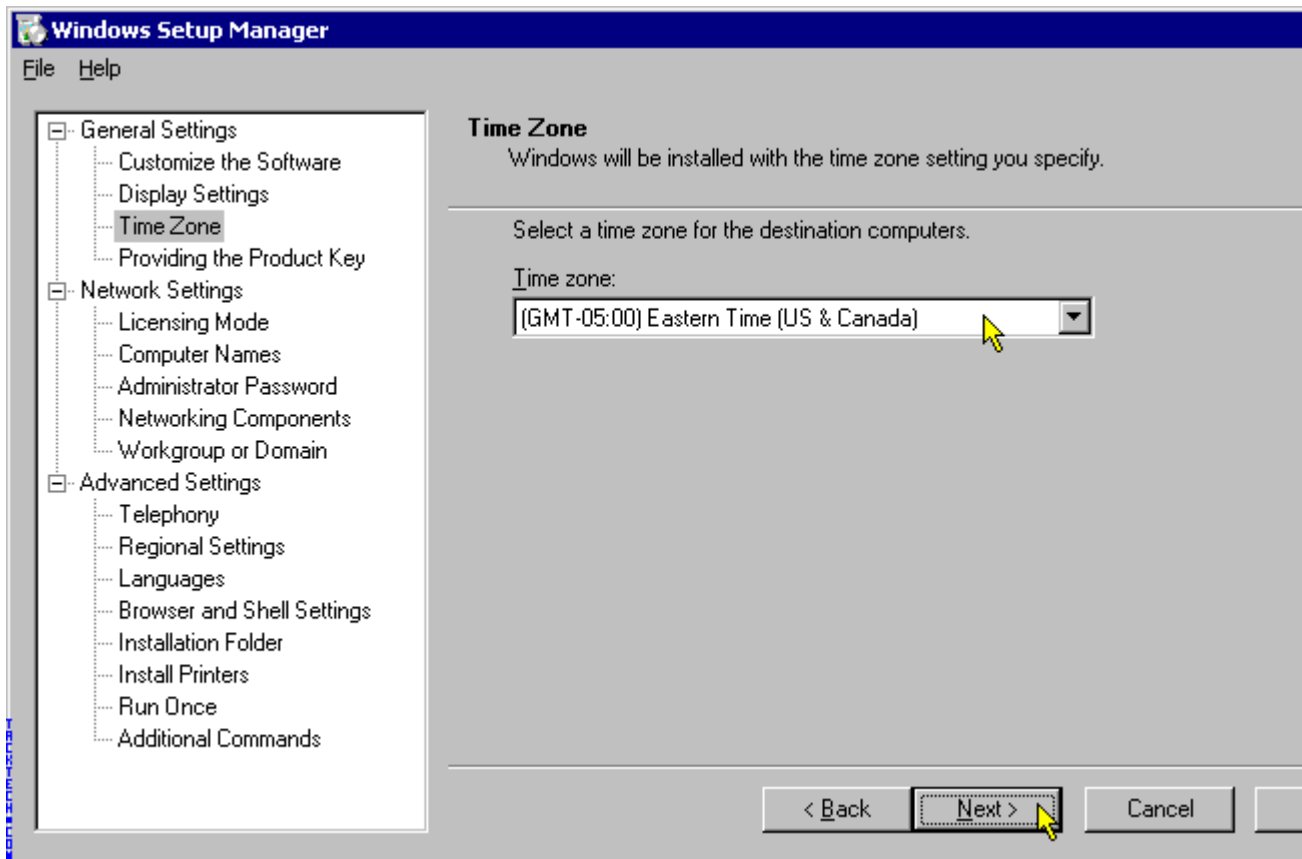
Enter your User Name and Organization. Click **Next**.



Choose the Colors / Screen Resolution / Refresh Rate for your monitor. Click **Next**.

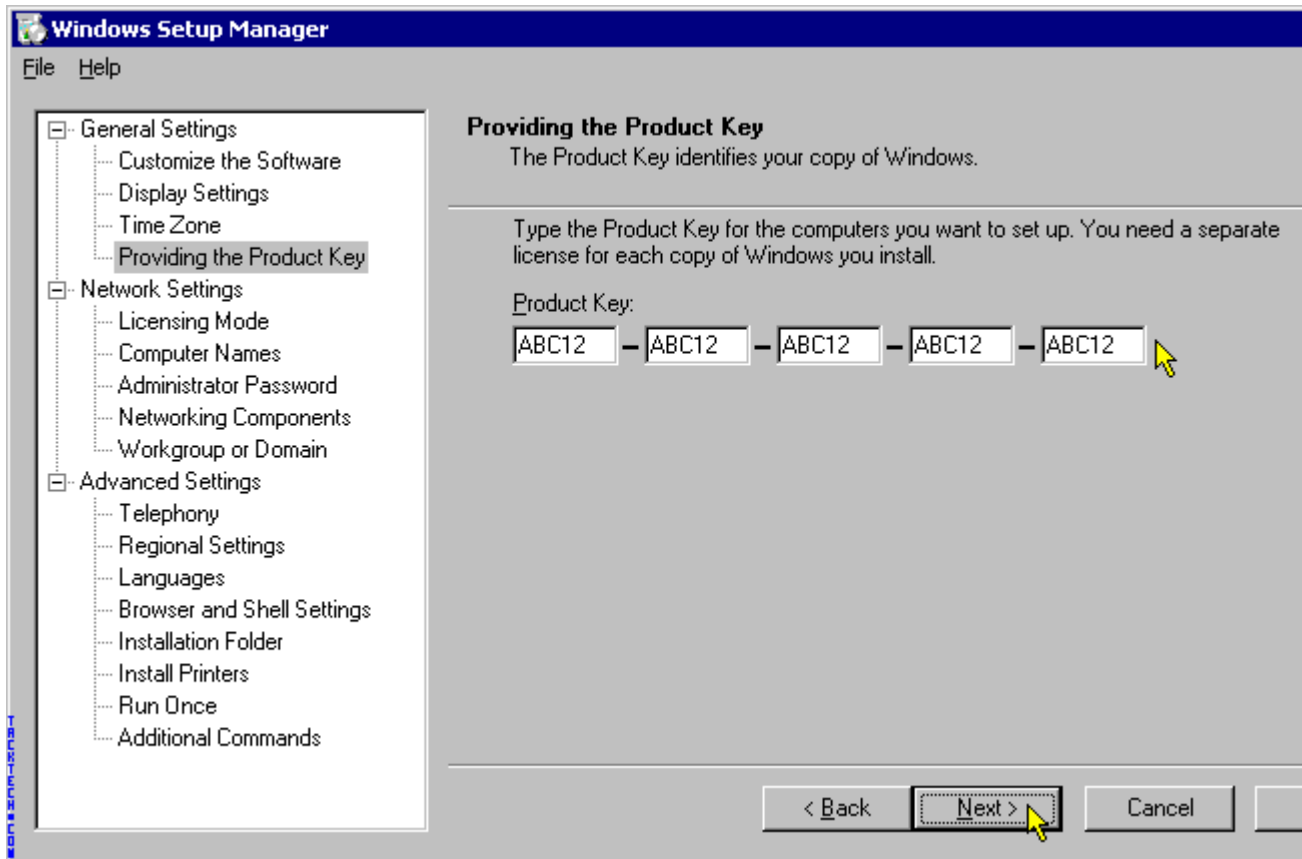


Select your **Time Zone** and click **Next**.

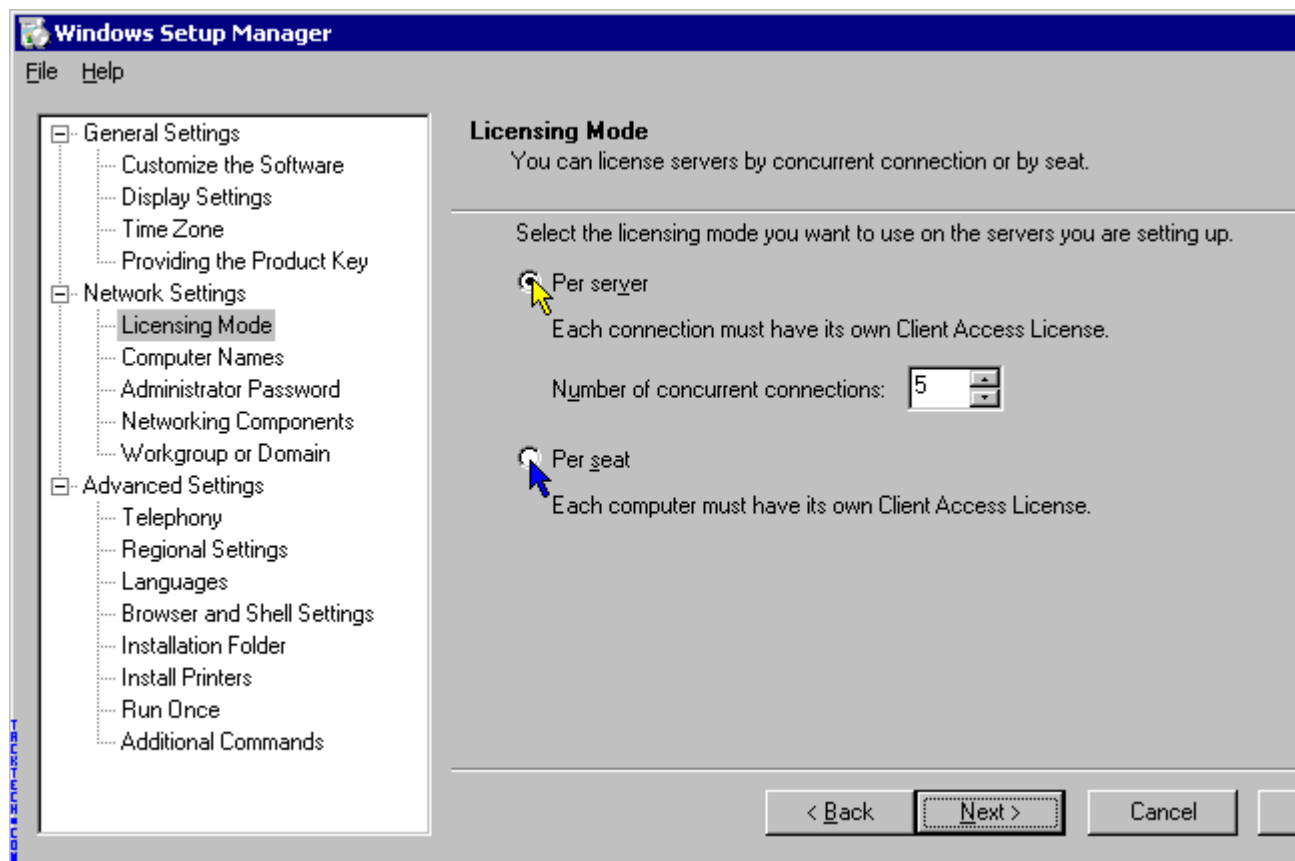


Enter your Product Key. Click **Next**.

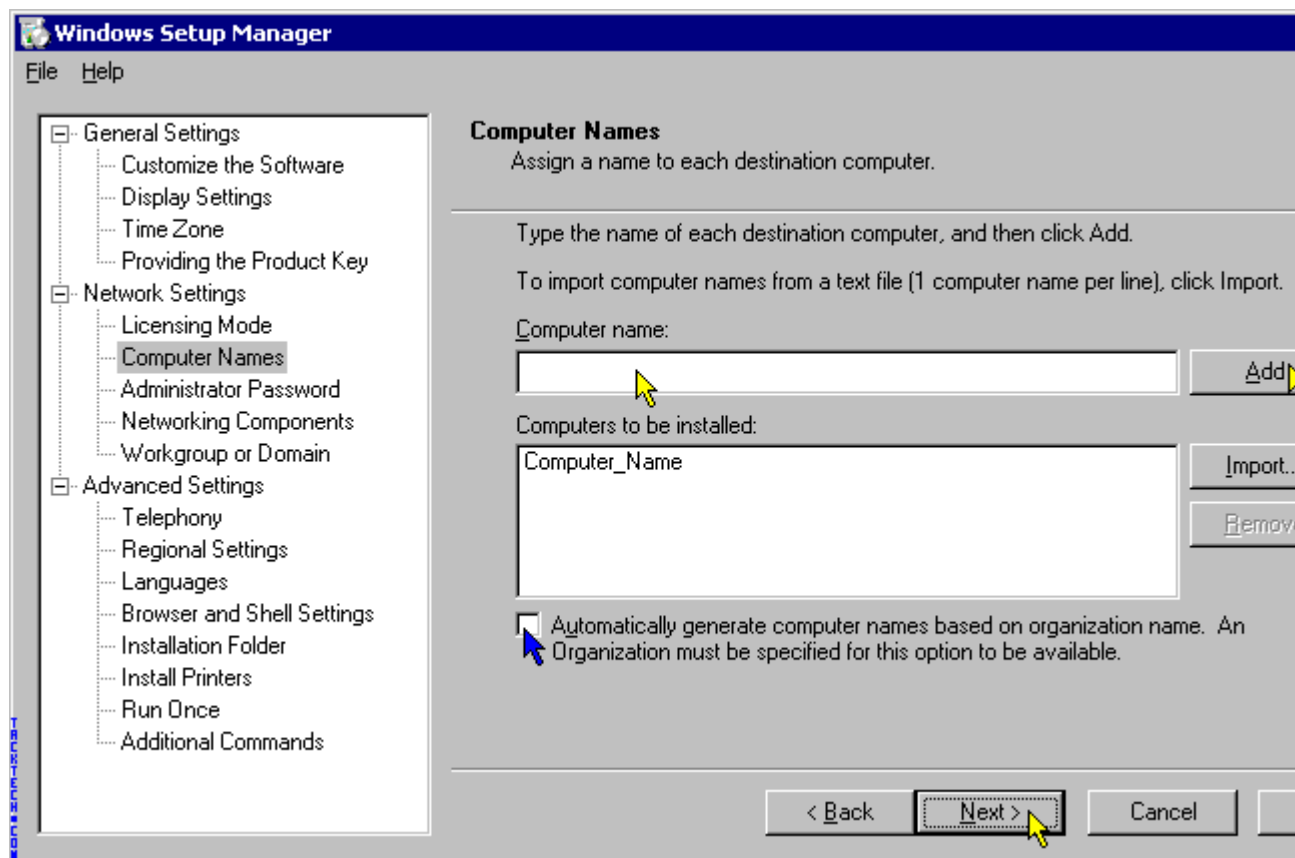
**Note:** Use your own Product Key.



Select **Per Server** or **Per Seat** for Licensing Mode. Click **Next**.

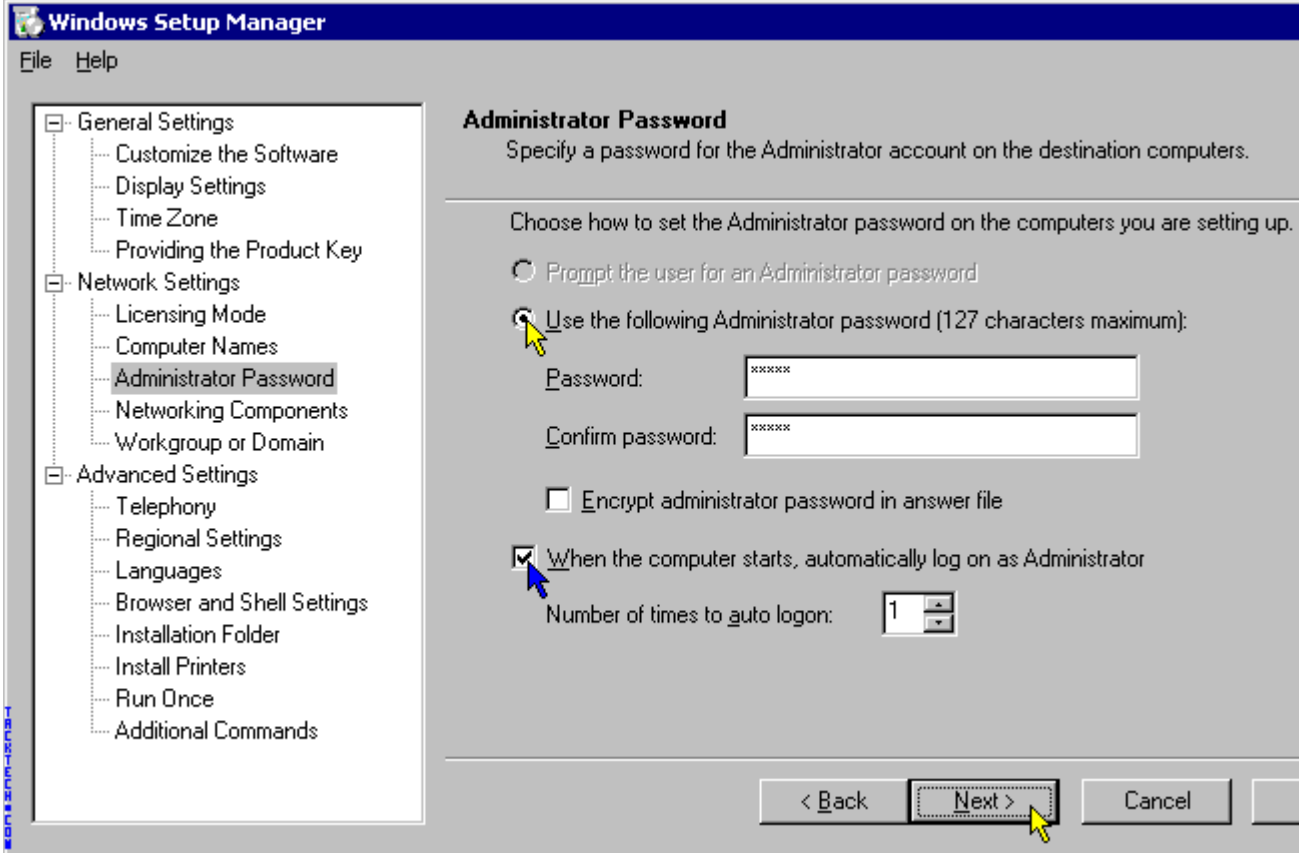


Enter a computer name. Click **Add**. Click **Next**.





Enter and confirm an Administrator password. You can also tell the install to auto-login the first time the computer. Click **Next**.



The screenshot shows the Windows Setup Manager interface. On the left is a tree view with categories: General Settings, Network Settings, and Advanced Settings. Under Network Settings, 'Administrator Password' is selected. The main area is titled 'Administrator Password' and contains the following options:

- Specify a password for the Administrator account on the destination computers.
- Choose how to set the Administrator password on the computers you are setting up.
  - Prompt the user for an Administrator password
  - Use the following Administrator password (127 characters maximum):
    - Password: [password field]
    - Confirm password: [password field]
  - Encrypt administrator password in answer file
  - When the computer starts, automatically log on as Administrator
    - Number of times to auto login: [spin box with value 1]

At the bottom right, there are three buttons: '< Back', 'Next >', and 'Cancel'. A mouse cursor is pointing at the 'Next >' button.

[Check out part 2 here.](#)

Running 2000-2002 [TACKtech Corp.](#)  
Last Updated: 08.24.2002  
For questions or comments send mail to:  
[kevin@tacktech.com](mailto:kevin@tacktech.com) or [travis@tacktech.com](mailto:travis@tacktech.com)