

[Print this Page](#) | [Close this Window](#)[Software](#) > [Windows 2000/XP](#) > [Creating an unattended installation of Windows 2000 or XP \(P](#)[< Return to Home](#) | [Printer Friendly Version](#)

## Creating an unattended installation of Windows 2000 or XP (Part 2) (TTID #203)

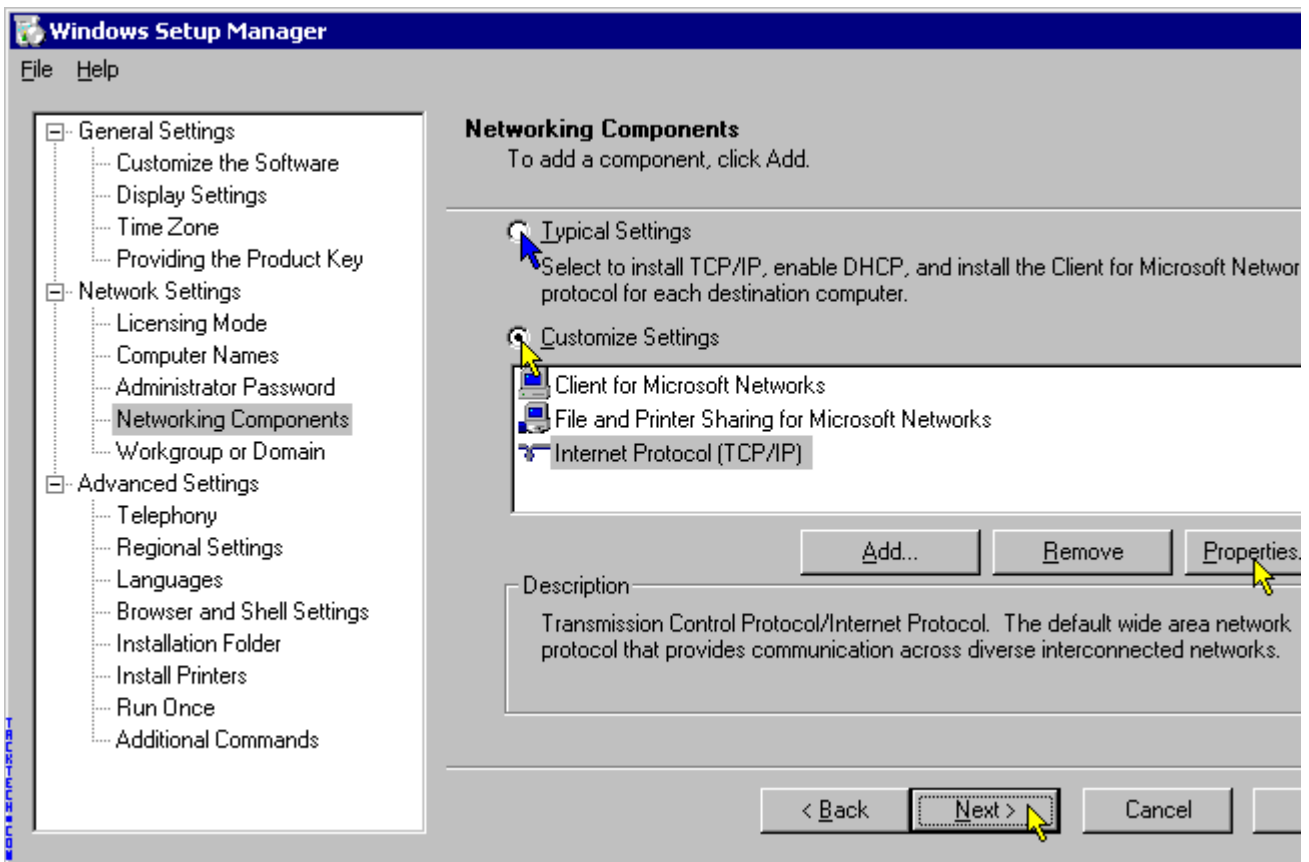
Author: Travis

Last Updated: October

This is Part 2 of [Creating an unattended installation of Windows 2000 or XP](#). See Part 1, [here](#).

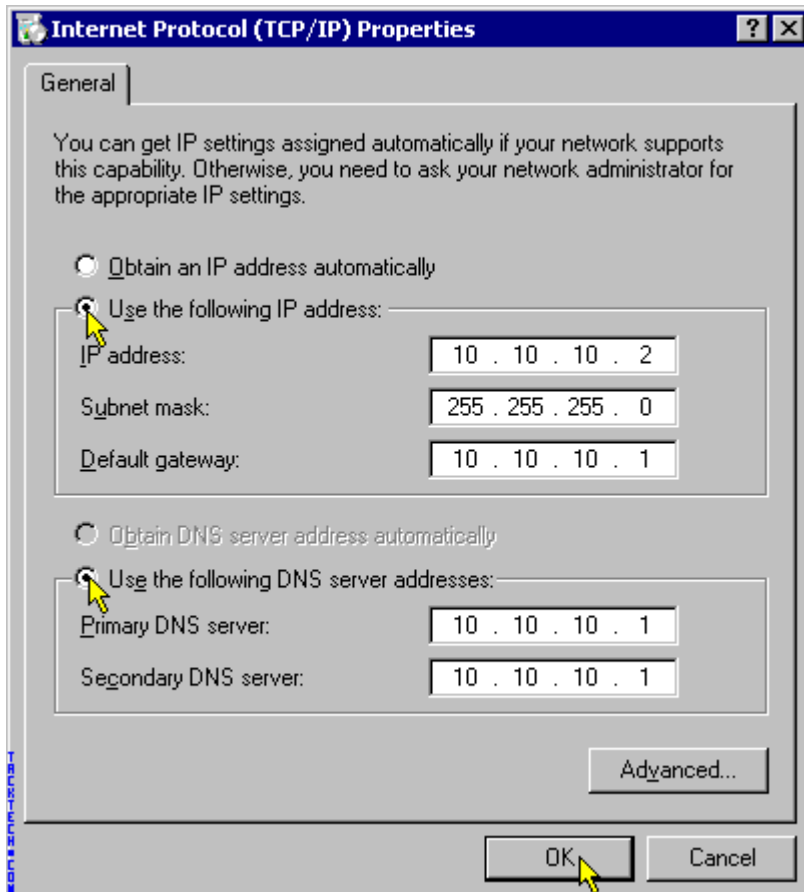
**Note:** Yellow Cursor is options we used, blue is alternative options that you can use.

Now, for the Networking setup. You can choose **Typical Settings** which is just DHCP setup. Or as we picked you can **Customize Settings** and edit the **Internet Protocol (TCP/IP) Properties**. You can see the properties options ne



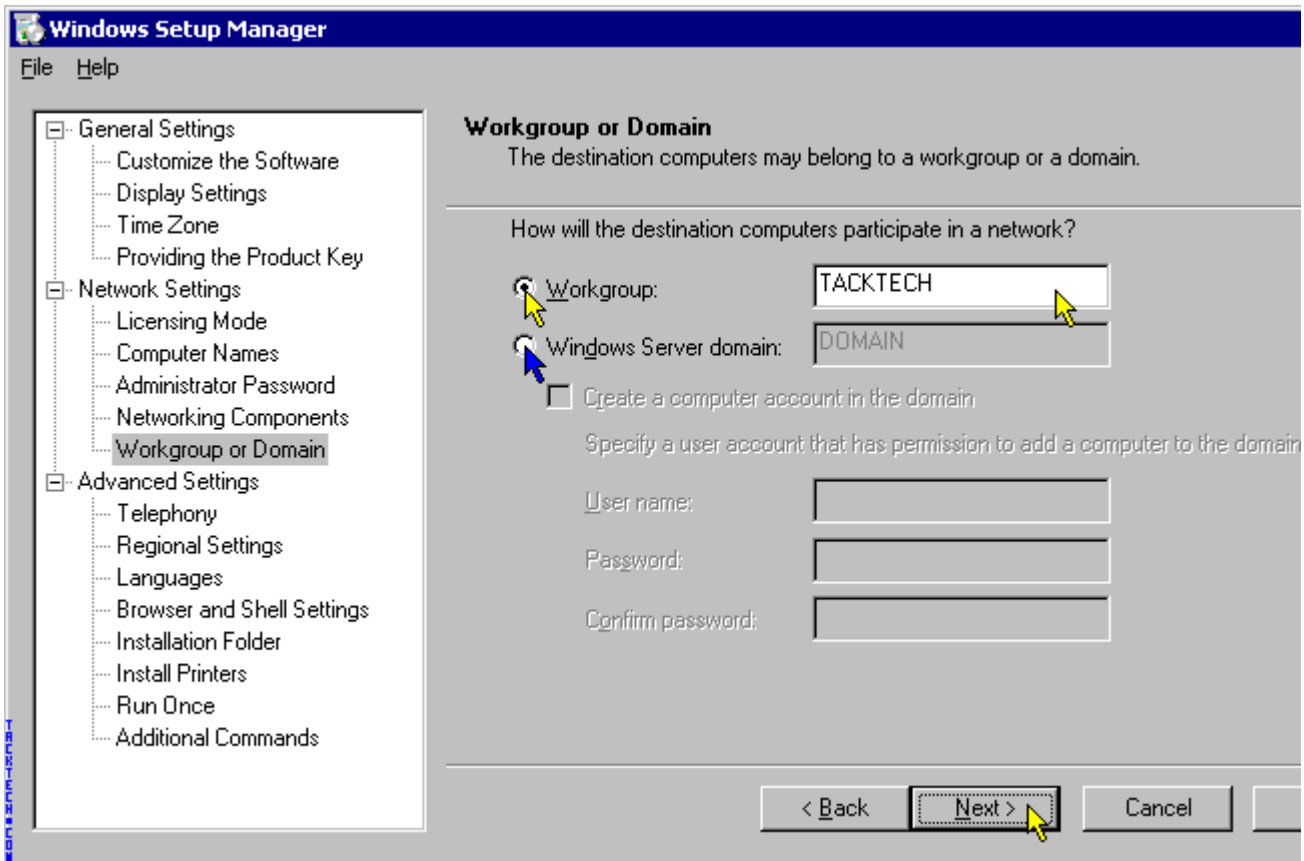
Enter your IP, Subnet Mask and, DNS numbers.

**Note:** Use your own info. Click **OK**.

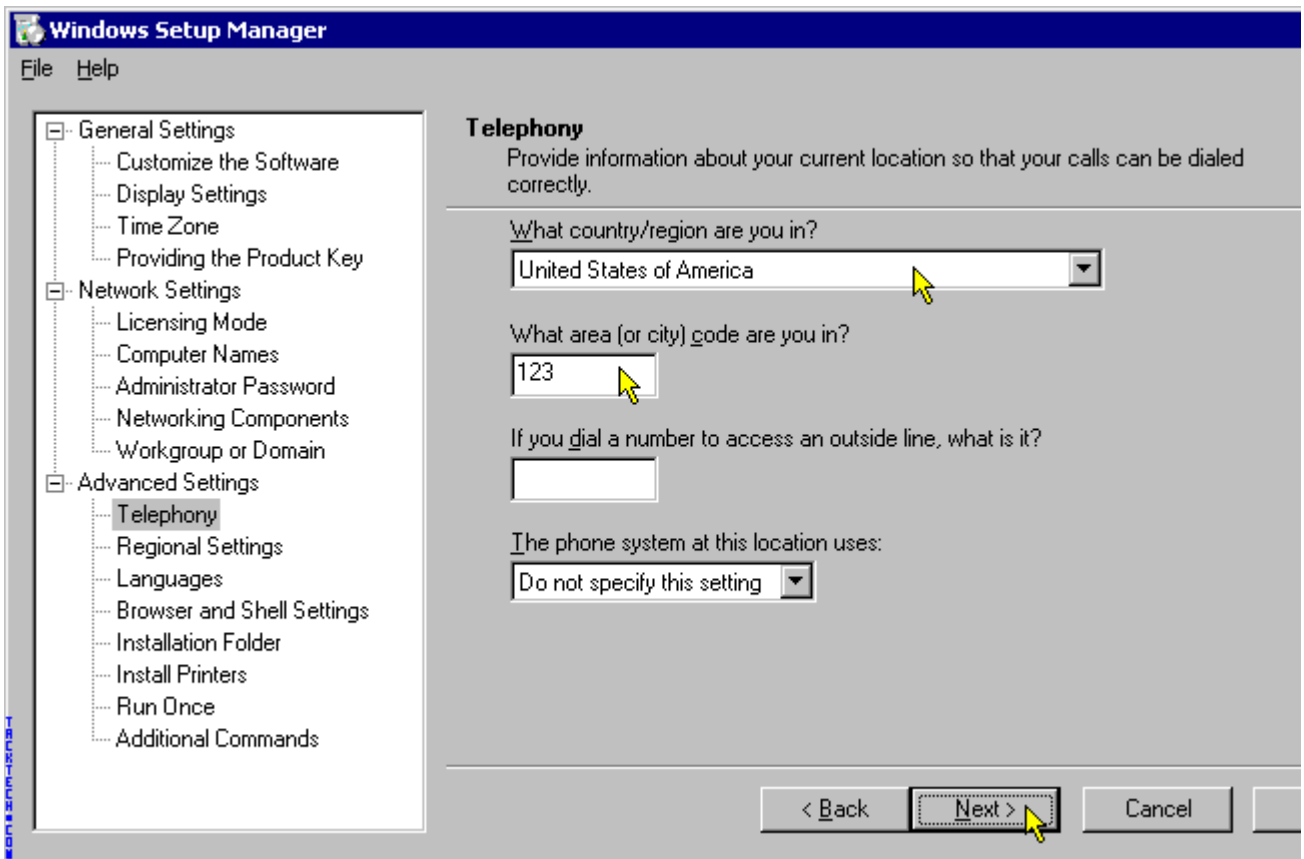


---

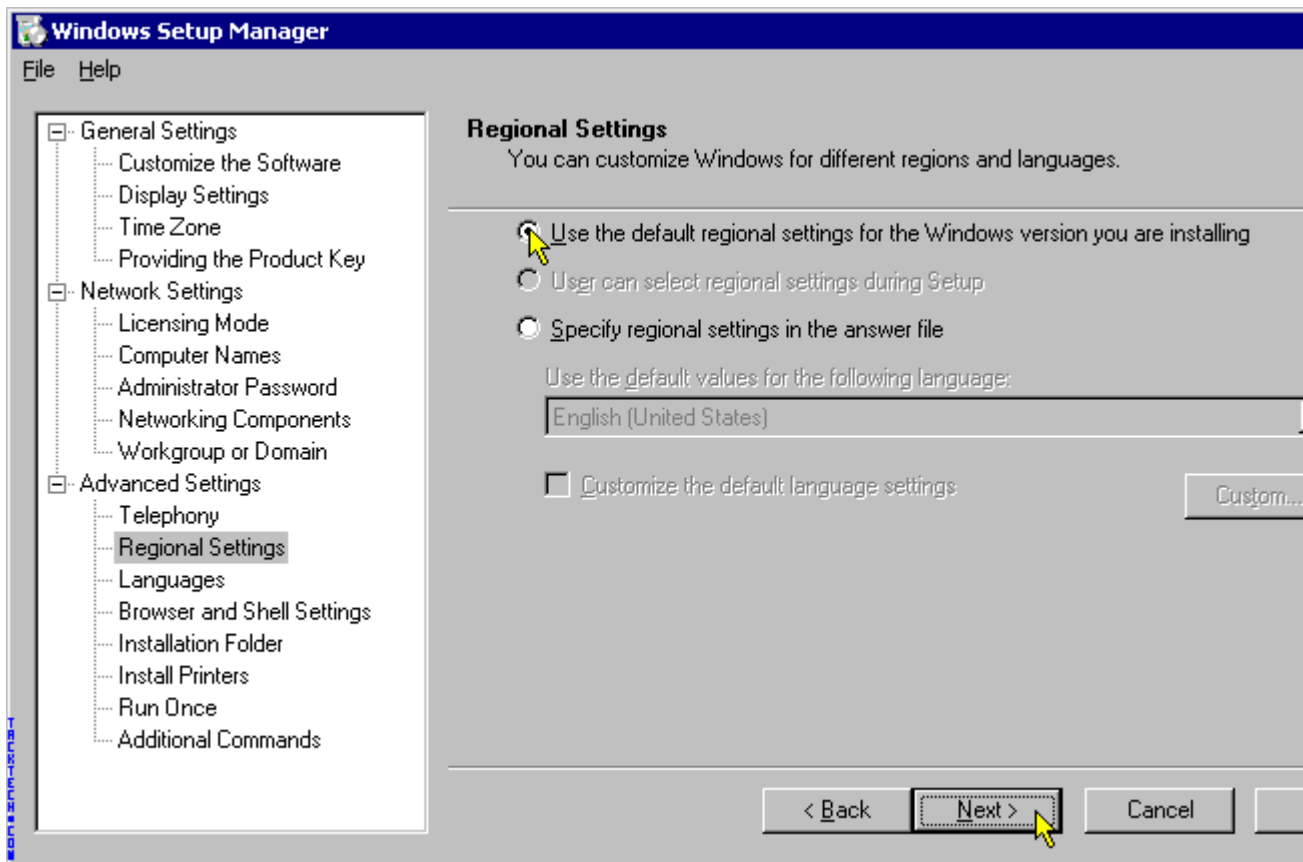
Next you finish the Network Setup.  
Select **Workgroup** or **Domain Server**.  
Enter your Workgroup or Domain name.  
Click **Next**.



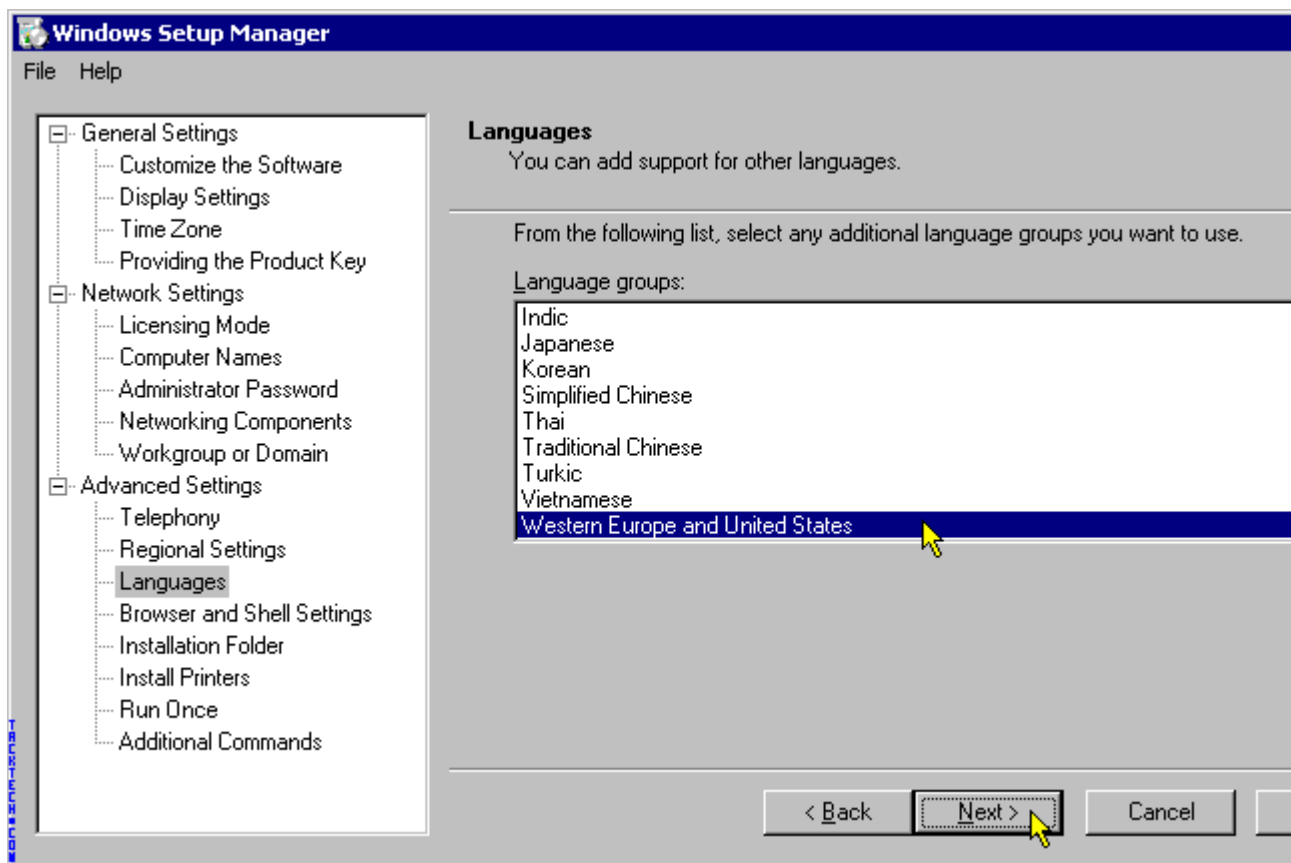
You can pick your Dialup settings here. Click **Next** when done.



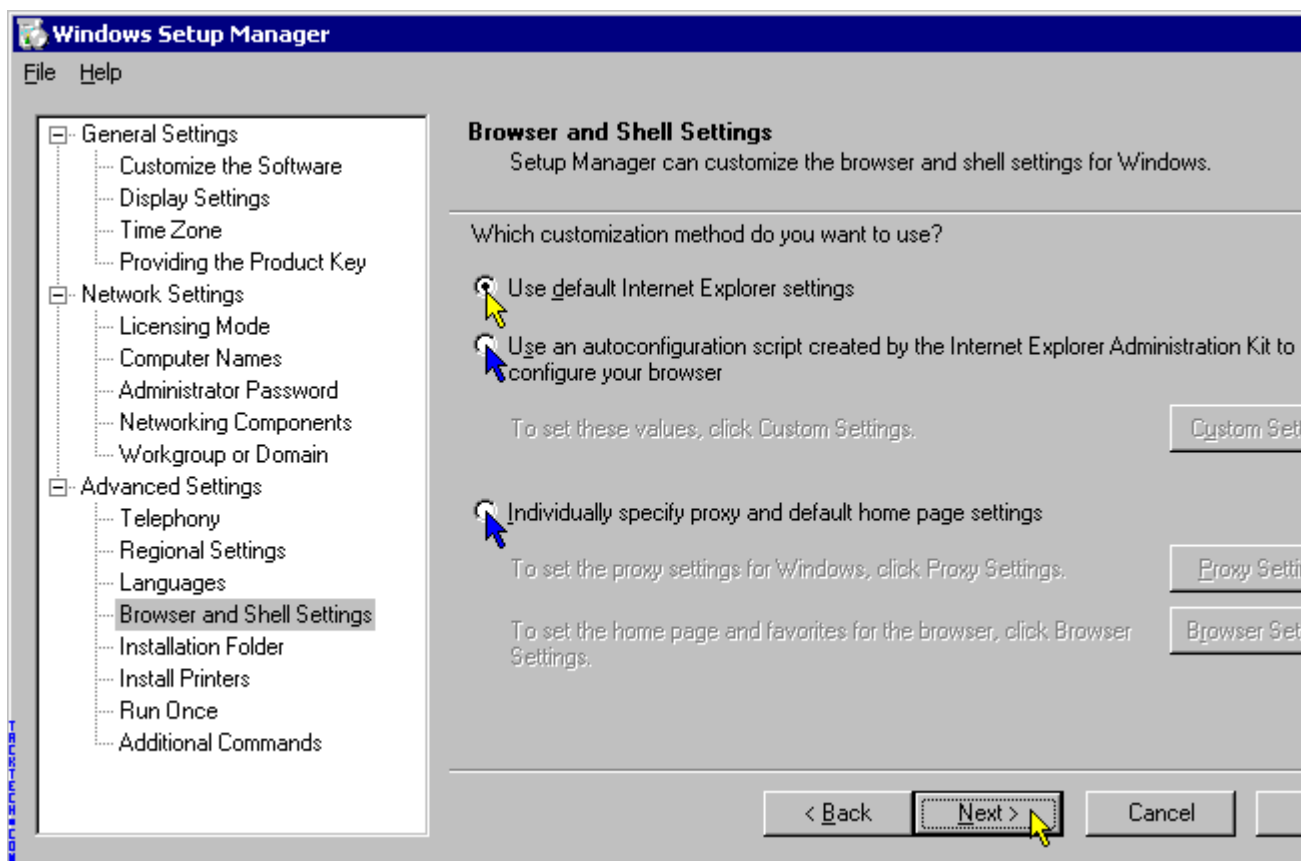
You can edit your **Regional Settings** here. Click **Next** when done.



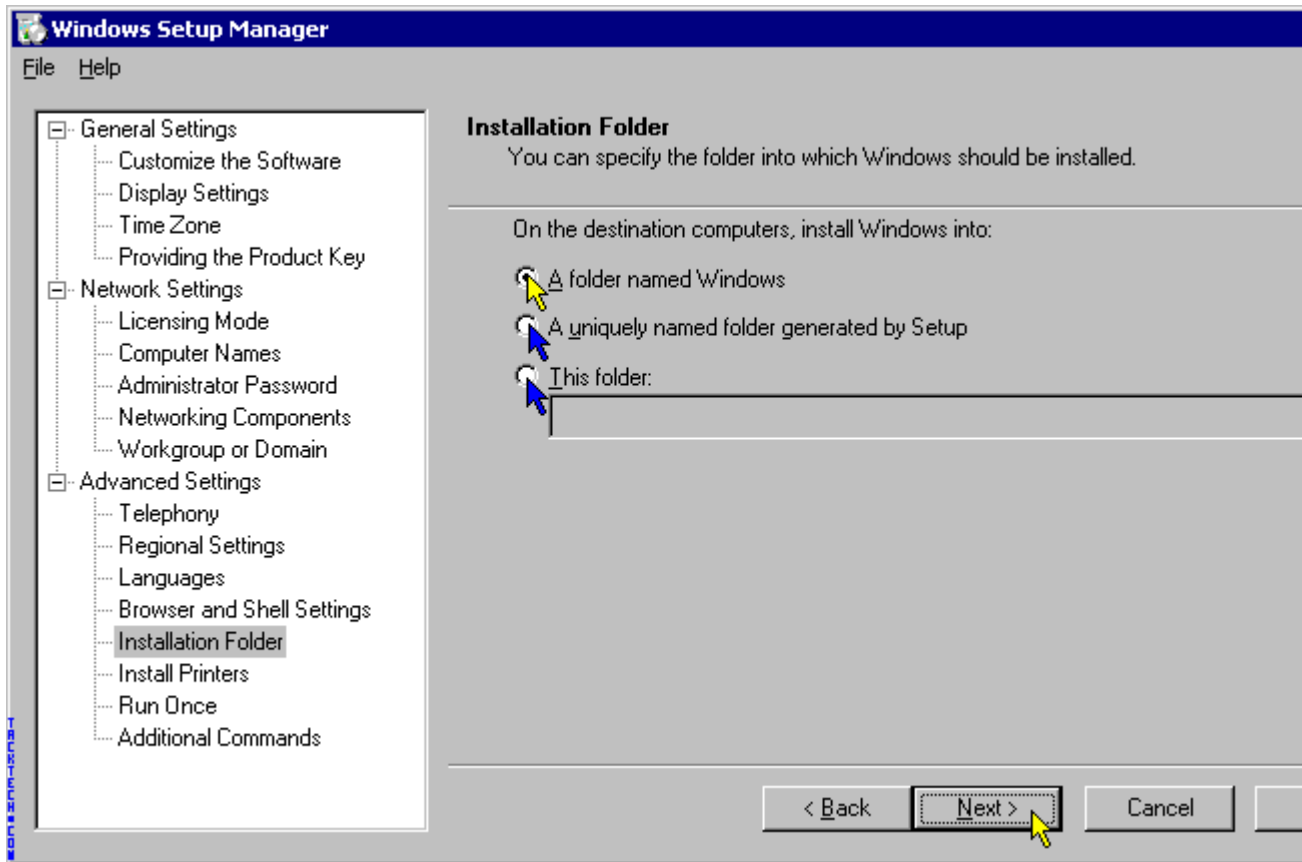
Select your **Language** here. Click **Next**



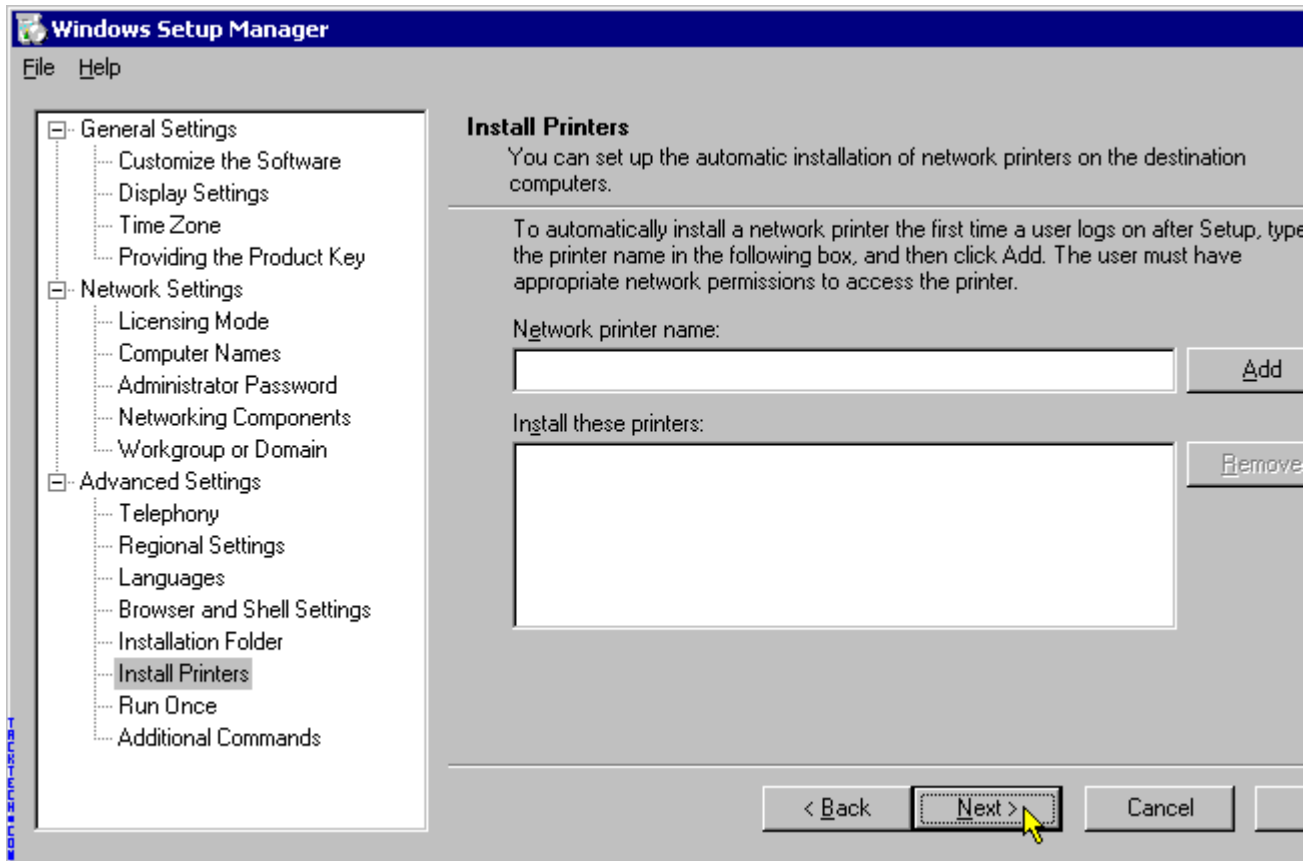
You can customize your Internet Explorer, here. I choose not too but you can read more on it in the help files. Click



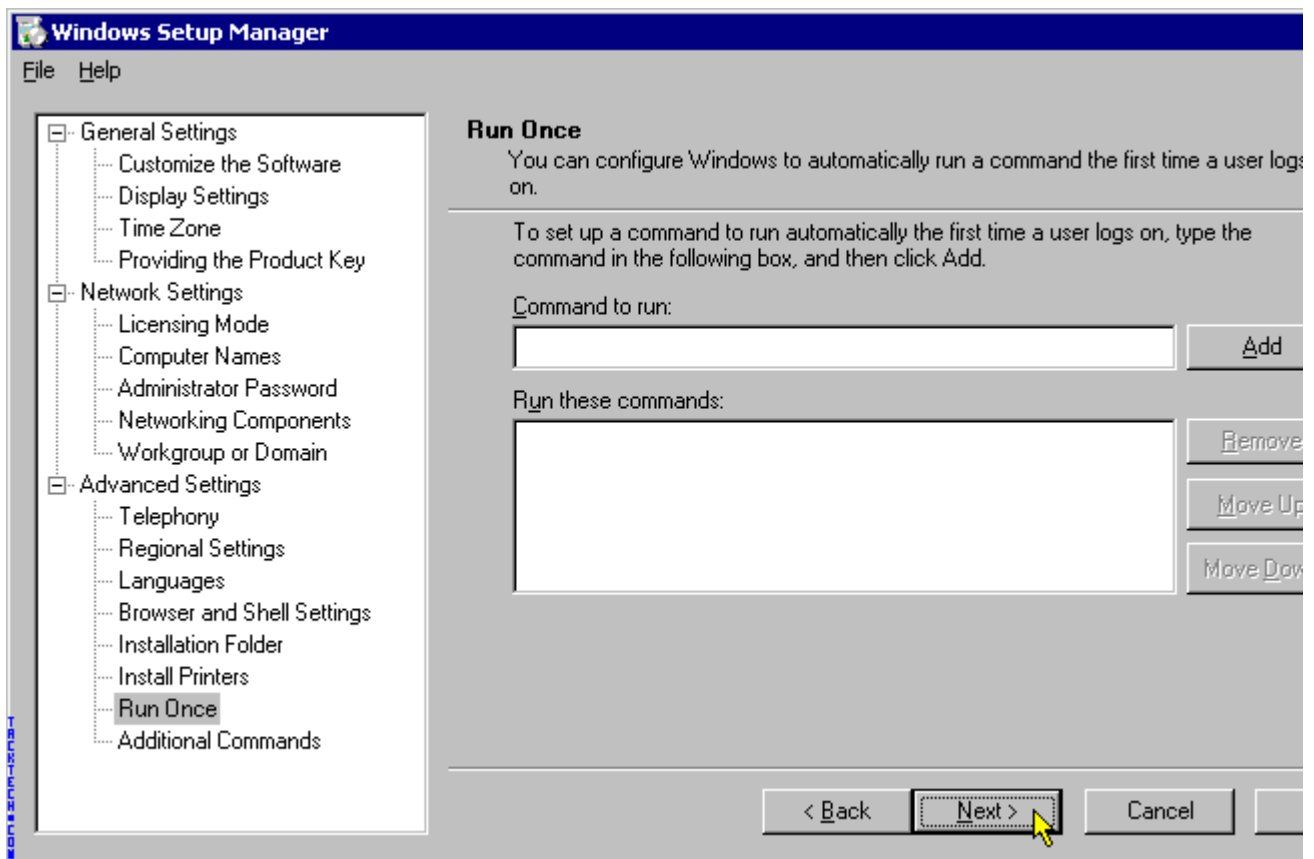
If you want to change the installation folder you can, here. Click **Next**



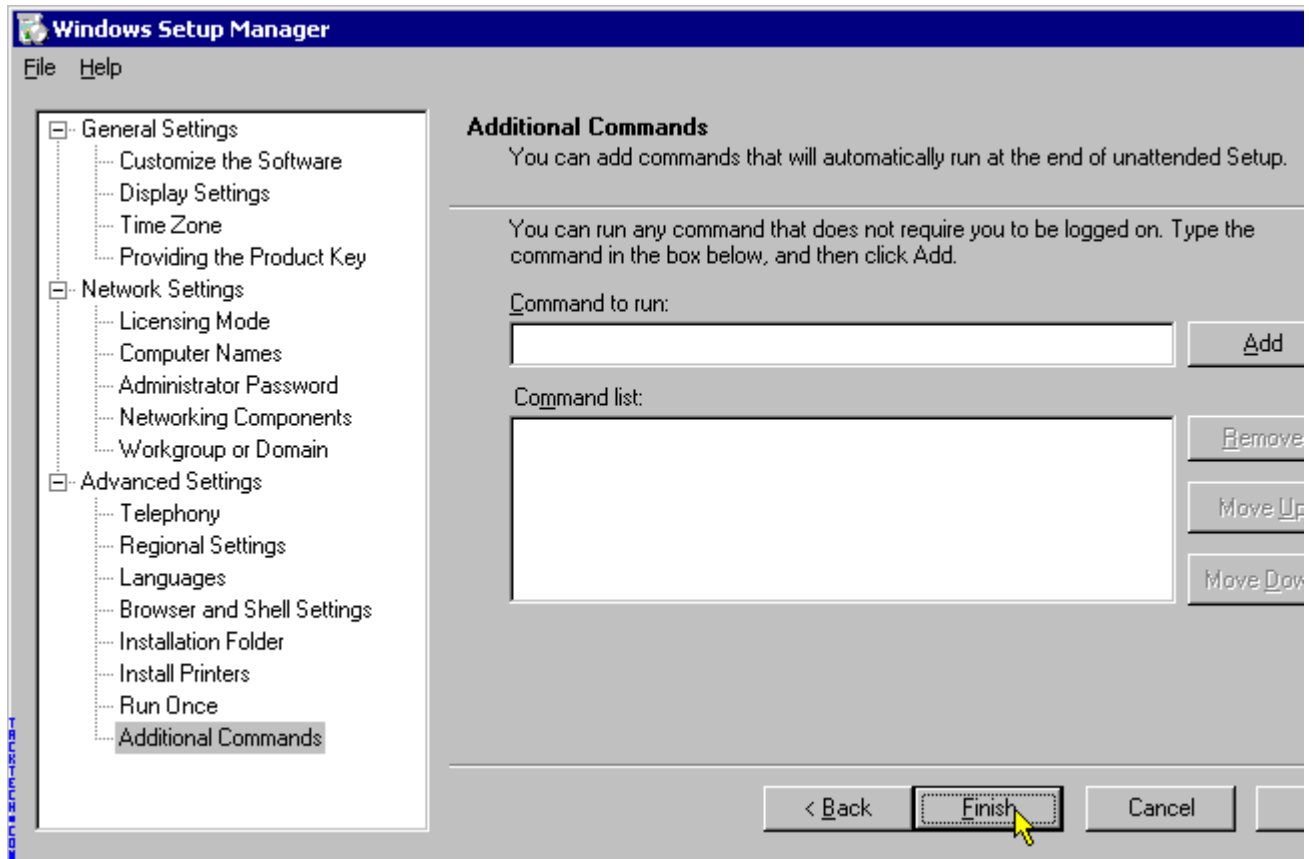
If you want to auto setup a Network Printer you can here. Click **Next**.



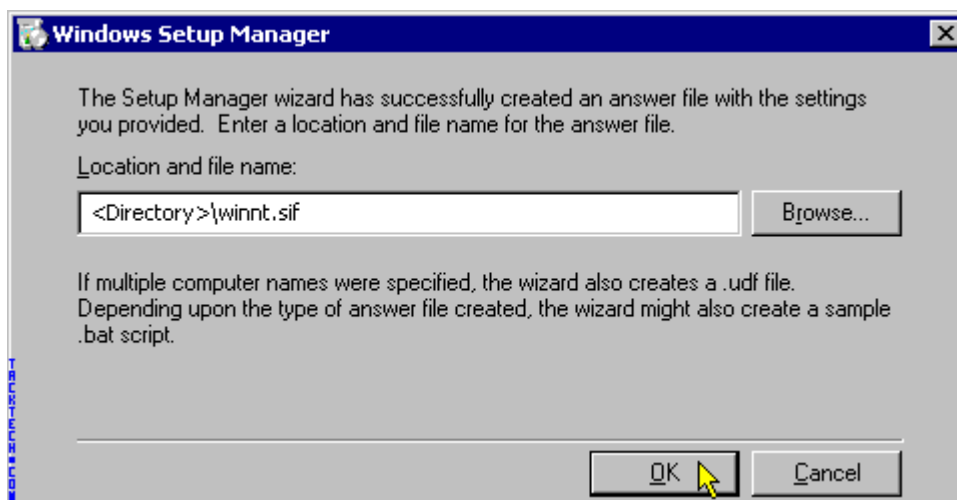
You can setup a run once job here to copy files or do what you need. Click **Next** when done.



**Additional Commands** can be added here. Click **Next**.

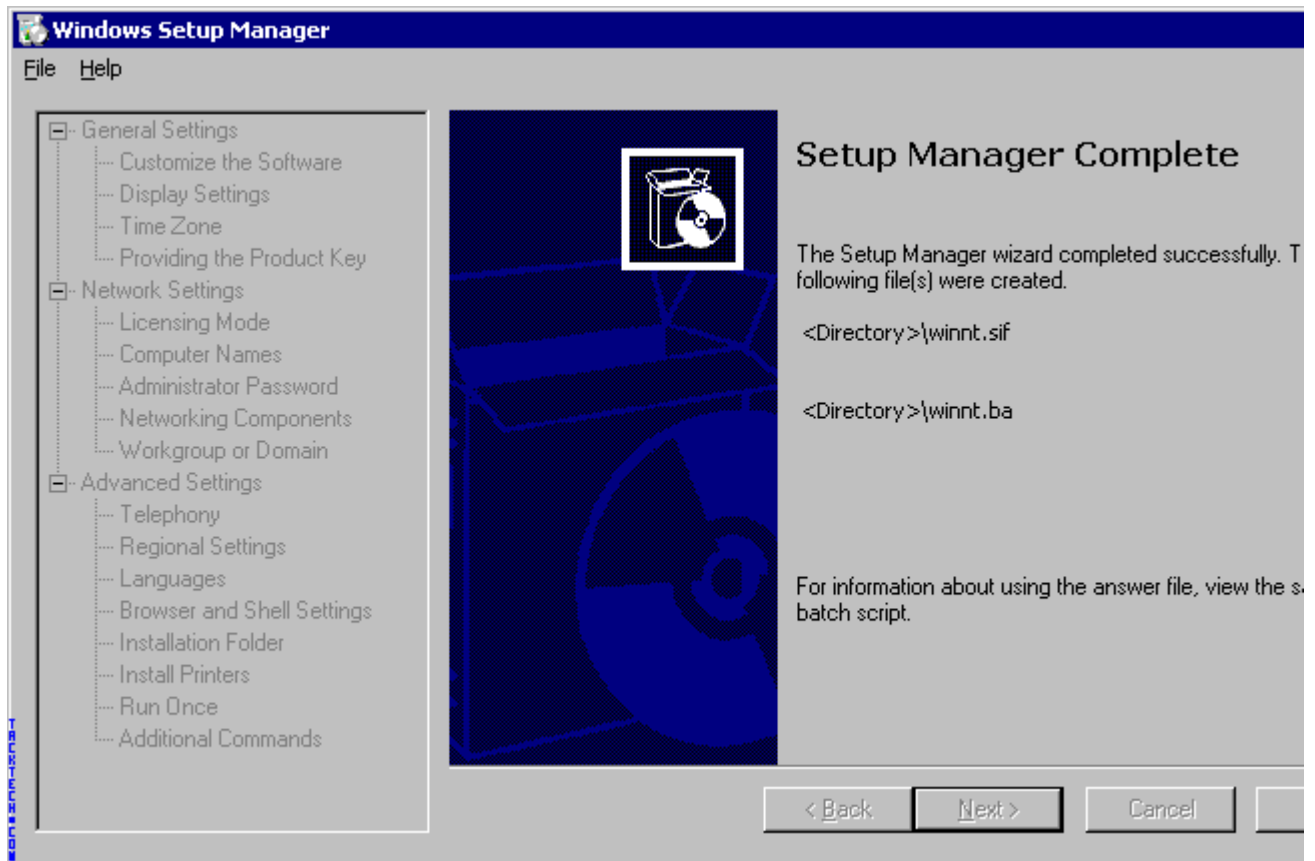


Next you will choose where to save the file and the name. To make things easy call it **winnt.sif**. This will create a **w** and **winnt.sif**.



Now, you will be at the final screen and the wizard is complete.

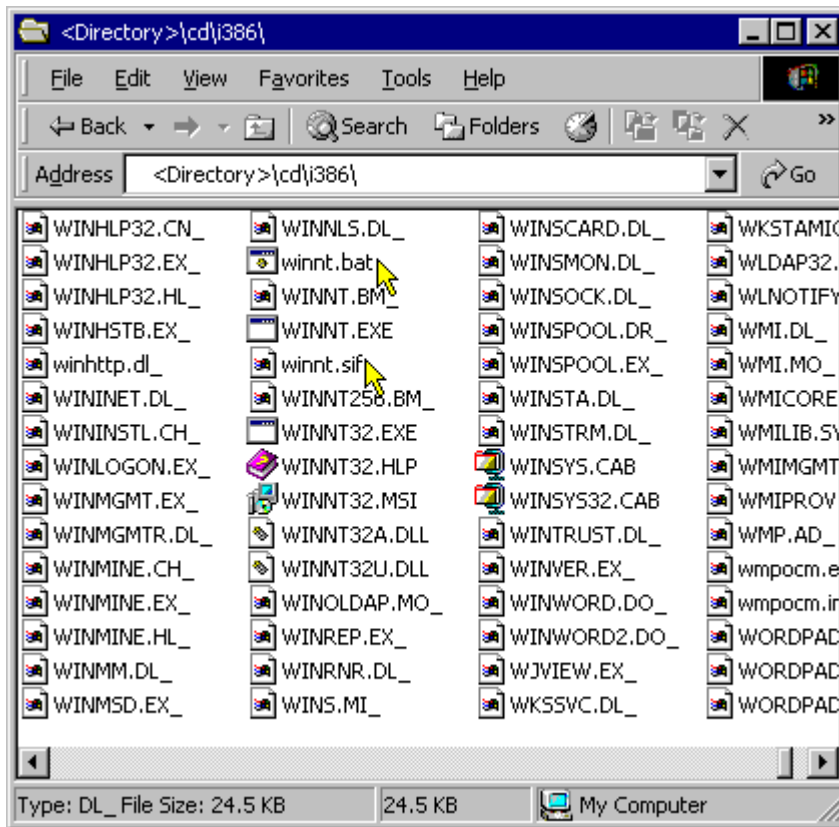


**Final steps:**

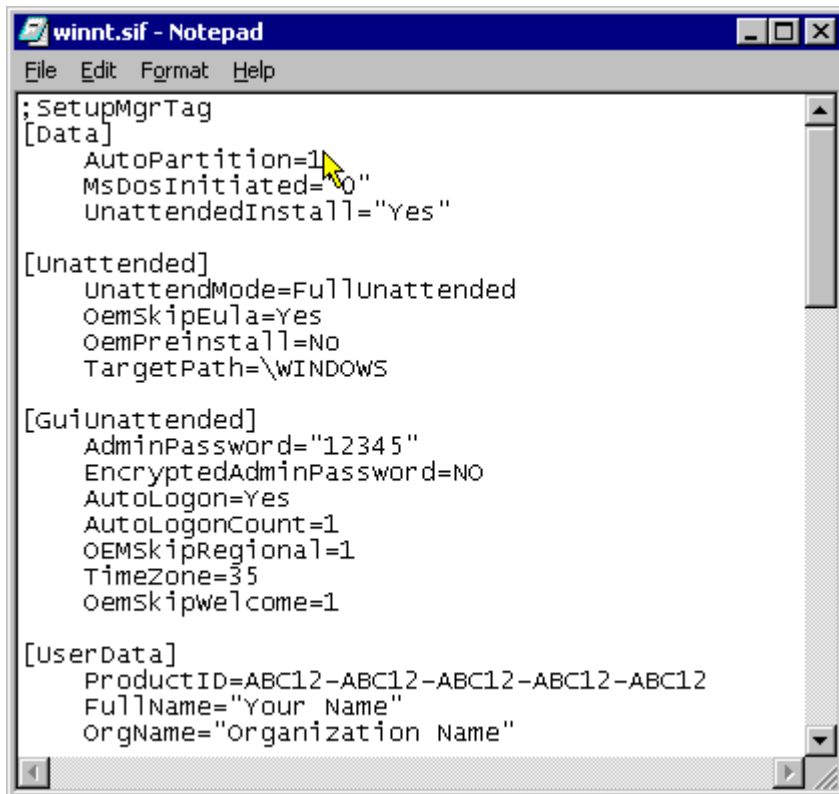
Copy your Windows 2000 or XP CD to **<Directory>\cd\**.

Copy the two files **winnt.bat** and **winnt.sif** to the **<Directory>\cd\i386\** directory.

Jump to our [Article](#) on slipstreaming Windows 2000 or [Article](#) on slipstreaming Windows XP and skip to the section c the CD. Follow the steps and you will have an unattended installation CD.



**Last Note:** The default is for the install to use and format the full hard drive as 1 partition. If you edit **winnt.sif** you can remove the **AutoPartition=1** it will prompt you for the size of the main partition and finish the install. So 9 unattended.



Running 2000-2002 [TACKtech Corp.](#)

Last Updated: 08.24.2002

For questions or comments send mail to:  
[kevin@tacktech.com](mailto:kevin@tacktech.com) or [travis@tacktech.com](mailto:travis@tacktech.com)