



Cramsession™ for Microsoft Front Page 98

This study guide will help you to prepare for Microsoft exam 70-055, Designing and Implementing Web Sites using Microsoft FrontPage 98. Topics include Analyzing Business Requirements, Defining Web Site Technical Architectures, Designing and Creating Web Sites, and Testing and Managing Web Sites.



Check for the newest version of this Cramsession

<http://cramsession.brainbuzz.com/checkversion.asp?V=2451956&FN=microsoft/fp98.pdf>



Rate this Cramsession

<http://cramsession.brainbuzz.com/cramreviews/reviewCram.asp?cert=FrontPage+98>



Feedback Forum for this Cramsession/Exam

<http://boards.brainbuzz.com/boards/vbt.asp?b=687>

More Cramsession Resources:



Search for Related Jobs

<http://jobs.brainbuzz.com/JobSearch.asp?R=&CSRE>



CramChallenge - practice questions

<http://www.cramsession.com/signup/default.asp#day>



IT Resources & Tech Library

<http://itresources.brainbuzz.com>



Certification & IT Newsletters

<http://www.cramsession.com/signup/>



SkillDrill - skills assessment

<http://skilldrill.brainbuzz.com>



Discounts, Freebies & Product Info

<http://www.cramsession.com/signup/prodinfo.asp>

Notice: While every precaution has been taken in the preparation of this material, neither the author nor BrainBuzz.com assumes any liability in the event of loss or damage directly or indirectly caused by any inaccuracies or incompleteness of the material contained in this document. The information in this document is provided and distributed "as-is", without any expressed or implied warranty. Your use of the information in this document is solely at your own risk, and Brainbuzz.com cannot be held liable for any damages incurred through the use of this material. The use of product names in this work is for information purposes only, and does not constitute an endorsement by, or affiliation with BrainBuzz.com. Product names used in this work may be registered trademarks of their manufacturers. This document is protected under US and international copyright laws and is intended for individual, personal use only. For more details, visit our [legal page](#).



Contents:

Contents:	1
Installation	2
HTML Essentials	2
Customer Support Web Template <i>contains these elements:</i>	6
Personal Web Template contains these elements:	6
Project Web Template contains these elements:	7
FrontPage Explorer	7
FrontPage Editor.....	9
Analyzing Business Requirements:.....	9
Target Audience	10
Maintenance Requirements	10
Security Considerations	10
Defining the Technical Architecture for a FP98 Web Site	11
Developing the Conceptual and Logical Design for a FP98 Web Site	12
Developing a User Interface and User Services for a FP98 Web Site	13
Establishing the Development Environment	13
Creating User Services	13
Testing a FP98 Web Site.....	14
Publishing a FP98 Web Site.....	15
Managing a FP98 Web Site	16
Managing Access to a FP98 Web Site	16
FP98 Server Extensions.....	17

Installation

Minimum Requirements: (KB# [Q178487](#))

- 486 or higher CPU
- 16 MB RAM; Windows 95/98
- 32 MB RAM; Windows NT
- 36 MB hard disk space
- VGA or higher resolution video adapter

Miscellaneous:

- A connection to the Internet is not required to use FP98, however, installation will fail if 32-bit TCP/IP protocol stack is not installed on the target system. (KB# [Q176742](#))
- FP98 Setup will inspect your system for the presence of a Microsoft Web Server and prompt you to install FrontPage 97 Personal Web Server if it does not find one.

HTML Essentials

- You are expected to have some experience with HTML. Here are some basic tags and the functions that create them in FP98 (for complete information on HTML standards, visit <http://www.w3c.org/>):

HTML TAG	FUNCTION	FP98 FUNCTION USED TO CREATE TAG
<html></html>	HTML Identifier	Created automatically by FP98. Identifies formatted text document as an HTML document
<meta>	Meta Information	Hidden information used for identifying authoring software, HTTP Refreshes, search engine indexing, etc. "<meta name="GENERATOR"...> tag created by default. All other meta tags must be entered using File > Page Properties > Custom Tab > User Variables > Add in FP98 Editor. (KB# Q194310)
<body></body>	Body Identifier	Identifies page content. Created automatically by FP98. All content entered into FP98 Editor Normal View will appear between these tags
<p></p>	Paragraph	Pressing Enter in FP98 Editor creates new paragraph (KB# Q194246)
 	Line Break	Pressing Shift + Enter in FP98 Editor creates Line Break
<title></title>	Page Title	In FP98 Editor, right-click on page, select Page Properties, enter new Title or in FP98 Explorer, right-click on page in Navigation

		View and Rename (preferred)
<code></code>	Anchor	Creates a Hyperlink by highlighting text/selecting image and selecting Insert > Hyperlink in FP98 Editor, then enter relative or absolute URL
<code><table></table></code>	Creates Table	Table is created in FP98 Editor by selecting Table > Insert Table
<code><tr></tr></code>	Table Row	Created automatically when Insert Table is used or by selecting Table > Insert Rows or Columns > Rows in FP98 Editor
<code><td></td></code>	Table Data Cell	Created automatically when Insert Table is used or by selecting Table > Insert Rows or Columns > Columns in FP98 Editor
<code><!-- ... --></code>	Comment	Allows a comment to be placed inside HTML code. Is not rendered in the users browser - they must view the page source to see the comment. Select Insert > FrontPage Component > Comment to insert a comment. Note: FP98 inserts all WebBot components between comment tags so that incompatible browsers will ignore the WebBot as it would a comment. Newer browsers parse the comment tags and process directives that they are aware of.

Important FP98 Features to understand (KB# [Q193955](#))

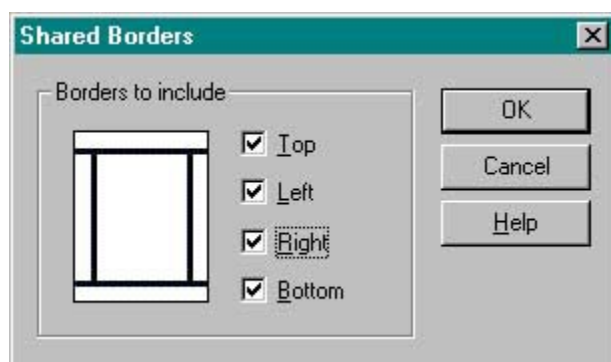
- *Banners* - Mainly used in conjunction with Navigation View, Navigation Bars and Shared Borders to provide consistency to a Web. When used with Shared Borders, the page title entered when creating a page in the Navigation View will appear as a text overlay on the graphical banner of your choice. Banners can be chosen from a pre-defined Theme or a custom banner can be used instead. (KB# [Q174421](#))
- *Banner Ad Manager* - Displays successive banner-sized images according to a timed schedule. Uses a Java class applet on the target system. The banner is linked to a pre-defined URL. Server Extensions are not required for this component to function. (KB# [Q173438](#))
- *Cascading Style Sheets Support (CSS)* - Created using `<STYLE>...</STYLE>` tags. Should only be used with version 4 or higher Netscape and IE browsers (IE3 support for CSS is limited). FP98 does not have a Style Sheets Wizard, but styles can be manually defined for some items by using the "Styles" button that appears on some dialog boxes in FrontPage Editor. (KB# [Q179628](#) and [Q180827](#))
- *Database Region Wizard* - Uses Active Server Pages (.ASP) technology. Requires an ODBC Data Source Name that is provided by your System Administrator. Database is accessed by means of an SQL Query String. Files created with the Database Region Wizard should be saved with the .ASP filename extension as they contain scripting that must be processed on the



- Web server. Save .ASP files in a directory with at least script permission or they will not work. (KB#s [Q174008](#), [Q174015](#) and [Q175771](#))
- *Discussion Web Wizard* - Builds a Web-based discussion forum with threaded messages for increased user interaction. Can be added as a sub-Web or integrated into an existing Web solution. (KB# [Q250839](#))
 - *Dynamic HTML (DHTML)* - Allows Webmaster to add animation and visual effects to a Web page. Accessed through Format > Animation... and Format > Page Transition... menus in FrontPage Editor. Generally supported by version 4 browsers and higher. Best support obtained by using IE - test all DHTML pages before deploying on a production server. (KB# [Q173422](#))
 - *Form Handling/Validation* - FP98's built in form handling features use pre-compiled CGI scripts allowing you to write your form results to file, e-mail them to a responsible party, or both. Validation can be either client or server side using JavaScript or VBScript. Using validation prevents users from submitting data that does not comply with the restrictions you have set in place. Confirmation forms can also be displayed using form field names. (KB# [Q194088](#))
 - counts the number of times your page has been accessed, or "hit". Requires FrontPage Server Extensions on Web server. Five default styles to choose from. Can be reset to a higher/lower number or restricted to a fixed length. (KB# [Q187773](#))
 - *Include Page* - WebBot Component that simplifies site management by inserting one HTML page inside another. Should be used when a Shared Border does not provide flexibility needed or when content needs to be inserted into a TABLE field. By default, Include Page will import everything between the <BODY>...</BODY> tags in the included document.
 - *Insert HTML* - FP98 has an extremely annoying habit of reformatting (Microsoft calls it "checking for correctness") all HTML code you manually enter using the HTML View in FrontPage Editor. If you want to stop FP98 from destroying a section of code, use Insert > FrontPage Component > Insert HTML in FrontPage Editor. Enter your HTML in the space provided and FP98 will place it in your document between these tags "`<!--webbot bot="HTMLMarkup" startspan -->...<!--webbot bot="HTMLMarkup" endspan -->`"
 - *Internet Database Connector* - Older technology that does *not* use Active Server pages. Queries an ODBC database by means of an Internet Database Connector (.IDC) file. Query results are returned by the Web server in an HTML extensions file (.HTX). (KB# [Q174407](#))
 - *Navigation Bars* - Used with Navigation View and Shared Borders. Contains a list of text links or graphical buttons with text overlays. Navigation Bar

hyperlinks are managed by FP98. To add, remove, or rename items on a Navigation Bar, use the Navigation View in FrontPage Explorer. Microsoft recommends that you let FrontPage handle your navigation and that you should use this feature. (KB# [Q180836](#))

- *Scheduled Image/Include Page* - allows insertion of an image or HTML page that will be specified for a specified time or date. You can specify and alternate image/page to be displayed before and after the scheduled item. After scheduling a component, remember to Recalculate Hyperlinks in FrontPage Explorer or the feature *will not*
- *Scripting* - FP98 includes a Scripting Wizard. Remember that when VBScript is used on the Web server, you are limited to only Microsoft Web servers but can use any browser. When VBScript is used on the Client Side, you are limited to Microsoft IE3 and higher.(KB# [Q194063](#))
- *Search Form* - Lets you add search capabilities to your Web. Searches all documents in your Web except for those stored in the "_private" folder. Integrated with Index Server on IIS4. Creates an .IDQ file which queries Index Server; results returned as a .HTX file (stored in the "_derived" hidden directory). The .IDQ file is stored in the "_vti_bin" hidden folder in your Web. FP98 Uses a WAIS search engine and text indices stored in the "_vti_txt" hidden directory when Index Server is not present. (KB# [Q194075](#) and [Q194484](#))
- *Shared Borders* - Used in conjunction with Banners, Navigational Bars and Navigation View to provide consistency to a Web. There are four borders that can be defined, top, bottom, left, and right. It is not possible to have two different items in a shared border in the same Web, (e.g. different copyright information for Marketing and Customer Support divisions in bottom Shared Border). Consider using Include Page feature or creating sub-Webs instead. (KB# [Q173435](#))



Tasks View - Multi-user To-do list and Enterprise feature of FP98.



- Allows multiple Webmasters to maintain a site without duplication of effort by assigning tasks to individuals or groups. It is important to understand this feature thoroughly before writing exam 70-055.
- *Templates and Wizards* - sets of predesigned documents that contain the structure, but not the content for new Webs or individual pages that are being created.
- *Themes* - A pre-defined set of graphics (.GIF files) and Cascading Style Sheets documents that can be applied to a Web to give it consistency and a professional appearance. Themes View in FP Explorer sets properties for the entire Web whereas Themes properties for individual pages can be altered in FP Editor. Themes are stored in the "_themes" hidden folder in your Web. (KB# [Q173421](#) and [Q180821](#))
- *Visual SourceSafe Integration* - Functions like RCS for UNIX. Automated by FP98 Server Extensions when enabled. When user opens a document, it is "checked out", preventing other users from accessing file. When user closes document, it is "checked (back) in" again. This prevents different users working on the same file at the same time and overwriting each other's changes. (KB# [Q189368](#) and [Q194544](#))

FP98 Templates and Wizards (KB# [Q173418](#))

Customer Support Web Template *contains these elements:*

- Welcome Page - Introductory document and table of contents
- Bugs - Form for reporting bugs/errata in product
- Download - Offers files for download
- Discussion - Web-based threaded discussion board
- Frequently Asked Questions
- Search - let's visitors search site by keyword
- Suggestions - Form for posting suggestions
- What's New - Section for providing late-breaking news to site visitors

Personal Web Template contains these elements:

- Home - Introduction and table of contents
- Interests - Place to list your hobbies/interests
- Favorites - Area for placing links to other Web sites you like



- Photo Album - A page to display your photographs to visitors

Project Web Template contains these elements:

- Home - Introduction, project overview and list of all changes to the Web site
- Archive - Single document that contains links to project resources
- Discussion - Web-based threaded discussion board
- Members - Contact info for persons involved in the project
- Schedule
- Search - Allows visitors to search site contents by keyword
- Status - Document that can be linked to status reports you create
- *Empty Web Template* - there is nothing in this template, it is used for creating Webs from scratch.
- *Corporate Presence Wizard* - walks the user through all of the steps necessary to create a corporate presence on the Internet.
- *Discussion Web Wizard* - used for creating an interactive, threaded, Web-based discussion board.

FrontPage Explorer

- A powerful tool used to manage an *entire Web site*. Not used for editing the properties of individual pages in the Web site (except for renaming pages in Navigation View). Used to create new Webs using one of three different methods:
 - Create an entire Web site from scratch
 - Create a Web using FP98 Wizards and Templates
 - Import an existing Web site (if site was authored with FrontPage, existing settings/themes will be imported - also works fine with sites authored using other means)

Has seven different views:

1. *Folders* - Displays a list of all files and folders in the current Web. Folders appear in left hand pane while subfolders and files appear in right hand pane (just like Windows Explorer)



2. *All Files* - Shows list of all files contained in site. Files are not separated by folder although folder info is displayed. This is the *only* view that allows you to find orphan files
 3. *Navigation* - Default view for sites created using FP98. Divided into two areas, Navigation Pane and Contents Pane. Navigation Pane shows flowchart like graphical representation of links between HTML documents in Web. Content Pane shows all files and folders in the current Web site
 4. *Hyperlinks* - Shows graphical view of linked objects in Web site. Direction of arrows indicate how objects are linked. Detail levels may be increased or decreased by clicking on the plus or minus signs. For internal documents only - external links are not displayed
 5. *Hyperlink Status* - Used for checking the status of internal and external hyperlinks. Green circles indicate links are OK. Yellow circles are for unchecked links and red circles denote broken links. Verified links are not displayed by default
 6. *Themes* - Used to assign a Theme to, or alter a Theme for a FP98 Web
 7. *Tasks* - A to-do list for multiple users. Action items are added to the Tasks listing and given a priority level. Tasks can be unlinked, or linked to specific objects/pages
- Spell check feature under Tools menu can be used to check spelling of all pages in site at once and can also assign tasks to pages found to have errors.
 - Replace feature under Tools menu can be used to replace words or character strings throughout the entire site (e.g. After joining with Cramsession, it's decided by those in charge that changing all incidences of "Cramsession" to "Brainbuzz" in a 3000+ page Web is desirable for marketing).
 - If you're one of those companies that gets acquired every second week, consider entering your company name into your Web as a variable - Tools > Web Settings > Parameters. Variables are used by inserting a "Substitution" FP98 component into pages with FrontPage Editor. Changing a variable in FrontPage Explorer causes the referenced variable to change throughout entire Web.
 - Shared Borders and Themes properties for the *entire Web* are set in FrontPage Explorer.
 - To change the title of a page, right-click on it in Navigation View and change it's name, this will change it's <TITLE>...</TITLE> tag. (Author's note: Microsoft pushes the Navigation View feature heavily in all of their training material, but in real life I've yet to meet a Web developer who will admit to using it - I certainly don't.) (KB# [Q173928](#))



FrontPage Editor

- Used to create/edit *individual* HTML pages. Cannot be used for managing the Web as a whole.
- Has five different Views (can be toggled by using the small tabs appearing at lower left corner of FrontPage Editor window):
 1. *Normal* - standard WYSIWYG working space showing approximate look of page in progress.
 2. *HTML* - allows viewing and direct editing/tweaking of HTML code.
 3. *Preview* - simulation of a Web browser, used for previewing how page will look in a browser, testing mouseover effects, etc. (KB# [Q174081](#))
 4. *No Frames (frames only)* - displays what nonframes users (i.e., those with antique browsers) will see.
 5. *Frames Page HTML (frames only)* - displays the raw HTML code of the frames document itself.
- Shared Borders and Themes properties for the *individual pages* are set in FrontPage Editor.
- Estimated loading time of document is always displayed in the bottom right hand corner of FrontPage Editor window. This estimation is based on 28.8 modem speeds.

Analyzing Business Requirements:

Information Sharing Needs

- *Internal* - addressed by an intranet Web solution. Content usually consists of org charts, reference materials, project status info, customer info, accounting data, sales projections, employee manuals, reports, etc. Discussion Web Wizard and Project Web Template are suggested for Internal info sharing needs. Usually confidential and requires that data is secured.
- *External* - addressed by an extranet or Internet Web solution. Content usually consists of product info/availability/ordering, payment information, shipping status, service requests, info about company, etc. Corporate Presence Web Wizard or Customer Support Web Template suggested for External info sharing needs.



Target Audience

- What types of browser is your audience using? Are you deploying to a mixed audience over the Internet or for a corporate intranet where all browsers have been standardized on Internet Explorer 4 (IE4) allowing you to use FP98's features that are proprietary to Microsoft browsers?
- What type of network connections will your audience be using to connect to your site? Modem users accessing through the public Internet or broadband access via the corporate LAN?

Maintenance Requirements

- Whenever possible, use a database solution (Database Region Wizard) rather than static HTML pages - it will reduce the administrative overhead in maintaining a FrontPage Web.

Security Considerations

- When an Administrator is creating a new Web, he/she has the option to check the "Secure Connection Required (SSL)" and use Secure Sockets Layer (port 443) to prevent unauthorized access to communications between the FrontPage client and Web server. This is the only way to protect passwords during authentication. (KB# [Q194072](#))
- Will organizational units within the company be maintaining their own sites? If so, consider creating sub-Webs under the Root Web. Sub-Webs can have different permissions assigned to them than the Root Web. (e.g. All computers but those belonging to the Research unit are denied access to the Research sub-Web.) (KB# [Q176134](#))

Defining the Technical Architecture for a FP98 Web Site

Support for FP98 features by Netscape and Internet Explorer:

Features	NN2	NN3	NC4	IE2	IE3	IE4	IE5
Active Channels	-	-	-	-	-	X	X
ActiveX	-	-	-	-	X	X	X
ASP	-	-	-	-	X	X	X
Background Colors	X	X	X	X	X	X	X
Background Images	X	X	X	X	X	X	X
Banner Ad Manager	X	X	X	-	X	X	X
Browser Plug-ins	X	X	X	-	X	X	X
Client-side Scripts	-	X	X	-	X	X	X
Collapsible Outlines	-	-	-	-	-	X	X
Comment Tags	X	X	X	X	X	X	X
Custom Font Colours	X	X	X	X	X	X	X
Custom Font Faces	-	X	X	X	X	X	X
Custom Font Sizes	X	X	X	X	X	X	X
Dynamic HTML	-	-	X	-	-	X	X
Forms	X	X	X	X	X	X	X
Frames	X	X	X	-	X	X	X
GIFs (animated)	X	X	X	-	X	X	X
Hover Buttons	X	X	X	-	X	X	X
Inline Audio/Video	-	X	X	-	X	X	X
Java	X	X	X	-	X	X	X
JavaScript	X	X	X	-	X	X	X
Marquees	-	-	-	X	X	X	X
Page Margins	-	-	-	-	X	X	X
Page Transitions	-	-	-	-	-	X	X

Style Sheets	-	-	X	-	-	X	X
Tables	X	X	X	-	X	X	X
VBScript	-	-	-	-	X	X	X

Legend: "X"=Supported, "-"=Not Supported

- User registration forces users to register before accessing a protected Web. Only works in the Root Web. (KB# [Q194156](#))
- When working with images, *always* include a text description in the Alternate Representations field of the Image Properties dialog. For extremely large images, a smaller low resolution image can be entered in Alternative Representations. It will be loaded first and replaced with the larger image when it has finished loading.
- Alternate text links should be provided for all navigational controls.
- In FrontPage Explorer, make sure the validation script settings you select are compatible with the end user's browser. You can do this by right-clicking in the Navigation View and selecting Web Settings > Advanced. This is also accessible in FrontPage Explorer under Tools > Web Settings > Advanced. Javascript is selected by default.
- Image maps can be set to server or client side. Choices for map styles are FrontPage, NCSA, CERN, and Netscape.

Developing the Conceptual and Logical Design for a FP98 Web Site

- Include Page or Scheduled Include Page/Image Components can be used for images or HTML that are the same throughout a Web but are sometimes changed or updated.
- Use the Tasks View to assign Action Items to multiple Webmasters collaborating on a site in order to prevent duplication of effort.
- Divide a site into Sub-webs with different administrators and access permissions to make it more manageable. (KB# [Q194210](#) and [Q194676](#))



Developing a User Interface and User Services for a FP98 Web Site

- Microsoft recommends using FP98's built in navigation tools rather than designing your own navigational scheme manually - less administrative overhead. (Author's note: This is important; it shows up often in the Microsoft Official Curriculum for both FP98 and FP2000).
- Applying Themes to a site give it a more consistent and professional look. Sub-Webs can use a variation of the Root Web's Theme.
- Use e-mail forms, discussion boards, suggestion pages and bug reports to add interactivity to a site by seeking user input.

Establishing the Development Environment

- FP98 comes with it's own Web server for testing locally before deploying content to a production Web server. This server is only appropriate for testing, it was not designed to be used by more than a handful of users.(KB# [Q194101](#) and [Q194229](#))

Creating User Services

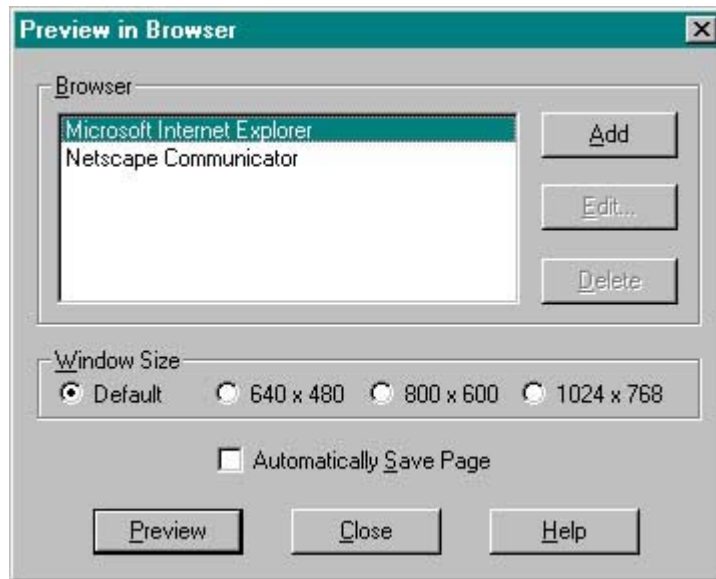
- Forms are used to collect user input. Form results can be written to a text file or HTML file on the Web server or sent by e-mail to a designated recipient. Setting Form Field Validation allows you to restrict the type of input a user can enter into a form field. If the submitted data does not meet the restrictions, a client-side VBScript (IE only) or Javascript (both browsers), the user is prompted to try again.
- Hidden fields are used to submit info unseen by the site visitor, like a form name.
- Use FrontPage Explorer's Navigation View to map out the Navigation Scheme for your Web.
- Defining channels allows a Webmaster to push data to site users. Launch the Channel Definition Wizard using Tools > Define Channel in FrontPage Explorer. (KB# [Q173920](#), [Q174055](#) and [Q177079](#))
- Background sound only works in IE. For Netscape users you will need to use a Javascript to do a browser level detect and send the right HTML code to the browser. (KB# [Q193057](#))



Testing a FP98 Web Site

- Webs should always be tested on a staging server before being published to a production Web server.
- FrontPage 97 Personal Web Server cannot be used for testing .ASP scripts as it does not support ADO (Active Data Objects). If you are developing a site using .ASP scripts you must use Microsoft Personal Web Server 4.0 for Windows 95/98, Microsoft Peer Web Services for Windows NT 4.0 or Microsoft Internet Information Server 4.0 for Windows NT 4.0 Server. .ASP scripts will not function on non-Microsoft Web servers. (KB# [Q194355](#))
- Browse-time components will not work on disk-based Webs. You will need to publish to a Web Server with FrontPage Server Extensions installed to test pages using these features. This applies to the following FP98 features: (KB# [Q173437](#) and [Q194308](#))
- Active Server Pages (ASP)
 - Discussion Form Handler
 - Internet Database Connector
 - Database Region Wizard
 - Hit Counter
 - Hover Button with a custom image
 - Registration Form Handler
 - Save Results Form Handler
 - Search Form
- Always test your site on as many platforms with as many browsers as possible (use Preview in Browser command in FrontPage Editor on development system to access installed browsers) to find out what compatibility problems may arise for your users. Try different resolutions and colour depth settings on your test systems as well (e.g. an 800 pixel wide table goes off the viewable screen of a user at 640x480 screen resolution - resize table accordingly).

The **most important tool** in FrontPage Editor for testing your Web site:



Publishing a FP98 Web Site

- Publishing moves your content from the server you are currently administering your Web from to a different server/servers.
- Sites are published using Files > Publish FrontPage Web or the Publish Button in FrontPage Explorer toolbar (one-click publishing). Webs cannot be published from within FrontPage Editor.
- Three publishing methods; one-click publishing, multisite publishing and FTP publishing. FP98 will first check for presence of FP98 Server Extensions, then will default to FTP method if it cannot find them and prompt user for FTP credentials. (KB# [Q194092](#) and [Q194093](#))
- FP98 can be set to publish "changed pages only" or "entire site".
- If publishing from behind a proxy server, use Tools > Options > Proxies in FrontPage Explorer to define the proxy server. It can be defined as either an IP address or NetBIOS name followed by a colon and then the port number (e.g. **192.168.1.100:8080** or **WEBPROXY:8080**)

Managing a FP98 Web Site

- Using the Navigation View you can add new pages to your Web, shuffle existing pages around between directories without breaking existing links and change a page's title.
- Periodically use the Hyperlink Status view in FrontPage Explorer to check for broken links, crucial for preventing "link rot". Remember that the Hyperlinks View only shows the relationship between internal documents on your Web, it does *not* tell you what links are broken.
- Enable VisualSourceSafe to prevent users from overwriting each others work.
- Change the editor used to open a certain file type by using the Tools > Options > Configure Editors Tab (e.g. change file association for .JPG so that it is opened using Adobe Photoshop instead of Paint Shop Pro.)
- To find orphaned files or all files created by a single user, use the All Files View. (KB# [Q202154](#))
- Use Tools > Web Settings > Configuration Tab to change a FP98 Web's name and title. (KB# [Q194089](#))

Managing Access to a FP98 Web Site

- Administrator privileges are needed to create, change, and delete FP98 Webs.
- Security settings for the Web or Sub-web can be altered under Tools > Permissions in FrontPage Explorer. Administration, authoring and browser privileges can be granted on a User or Group basis. Permissions in sub-Webs can differ from the Root Web. (KB# [Q194670](#))
- An administrator can grant or block access to a Web on a user, group or machine basis.

FP98 Server Extensions

Supported Platforms:

Platform	Operating System	Web Servers
Intel x86	Microsoft Windows NT 4.0 Server	Microsoft Internet Information Server 4.0 Netscape Commerce Server 1.12 Netscape Communications Server 1.12 Netscape Enterprise 2.0 and 3.0 Netscape FastTrack 2.0
Intel x86	Microsoft Windows NT 4.0 Workstation	Microsoft Peer Web Services
Intel x86	Microsoft Windows 95/98	Microsoft Personal Web Server Microsoft FrontPage® 97 Personal Web Server
Alpha	Microsoft Windows NT 4.0 Server	Microsoft Internet Information Server 4.0
Alpha	Microsoft Windows NT 4.0 Workstation	Microsoft Peer Web Services
Alpha	Digital UNIX 3.2c, 4.0	Apache 1.1.3, 1.2.4, 1.2.5 CERN 3.0 NCSA1.5.2 (1.5a or 1.5.1 are not supported) Netscape Commerce Server 1.12 Netscape Communications Server 1.12 Netscape Enterprise Server 2.0 and 3.0 Netscape FastTrack 2.0
Intel x86	BSD/OS 2.1 BSD/OS 3.0 Linux 3.0.3 (Red Hat Software) SCO OpenServer release 5* SCO UnixWare 7*	same as above
PA-RISC	HP/UX 9.03, 10.01	same as above
RS6000	AIX 3.2.5, 4.x*	same as above
Silicon Graphics	IRIX 5.3, 6.2	same as above
SPARC	SunOS 4.1.3, 4.1.4	same as above

- The following is a list of special files and directories maintained by Microsoft FrontPage 98:

Folders	Files	Purpose
_overlay	*.gif	Overlay files for FP98™'s text on GIF and navigation button features. These files are transparent GIFs that are overlaid on top of base button or banner images to build a complete text on GIF or navigation button image.
_derived	*.htx, *.gif	Dynamically generated by FP98 and can be recreated at any time, like *.htx files created by the FP98 Search Component (only with IIS with Microsoft Index Server) and composite text on GIF images (e.g., theme buttons and banners).
_borders	top.htm, left.htm, right.htm, bottom.htm	Shared border definition files that are included into pages using shared borders.
_themes	*.gif, *.inf, *.css files for each theme	FP98 themes storage. Each theme that is applied to the web is uploaded into a uniquely named subfolder of the _themes directory. Each theme consists of GIF, CSS, and INF files that define the theme.
_fpclass	*.class	Compiled Java class files that implement the Banner Ad Manager and Hover Button FP98 components.
_private		This folder is created in each FP98 web. It is intended to contain user files that are not browsable. Does not work on IIS servers. The good news is that Index Server will ignore any documents placed in this folder and not return them in site searches.
_vti_bin	shtml.dll shtml.exe	Stub FP98 Server Extensions executables for runtime functionality.
	fpcount.exe	Runtime portion of the FP98 Hit Counter component.
	*.idq	Query files created by the FP98 Search component when using IIS with Microsoft Index Server. These files reside in the _vti_bin directory in order to get execute permissions.
_vti_cnf	For each HTML page and graphics file in a FrontPage web there is a configuration file of the same name.	Each configuration page contains a set of name value pairs, identifying things like the last author to edit a page or the program associated with a file.
_vti_log		Root web only. Only populated after the web administrator has enabled logging in the frontpg.ini or we<port>.cnf file. When active, an author.log file gets created here logging only FrontPage authoring and administration operations.



_vti_map		Contains image map files.
_vti_txt		Contains text indices for the WAIS search engine only. Not used by Index Server on IIS.

- When planning a Web, consider whether or not the server hosting the production Web site will have FP98 Server Extensions installed. If not, the following FrontPage Components should not be used in your Web: (KB# [Q194051](#))
 - Confirmation Field
 - Discussion Form Handler
 - FrontPage created server-side image maps
 - Hit Counter
 - Registration Form Handler
 - Save Results Form Handler
 - Scheduled Image
 - Scheduled Include Page Component
 - Search Form

Special thanks to
[Sean McCormick](#)
for contributing this
Cramsession.